

oversize
K
912,781
541
1913

Alisa
LM
406
no. 11

Aug 14. 1913



PLAT BOOK, DIRECTORY AND SURVEY

OF SHAWNEE COUNTY, KANSAS 1913

Compiled from Latest Data on Record

Published by KANSAS FARMER, Topeka, Kansas

Copyright 1913 by KANSAS FARMER Co.

INDEX TO ADVERTISEMENTS

ATTORNEYS.	PAGE
Bird & Lashbrook	
ABSTRACTORS.	
Clark-Real Abstract Co.—See inside front cover.	
AUTOMOBILE ACCESSORIES AND REPAIRS.	
Capital Auto & Supply Co.	40
Elmore Auto Co.	40
Kinley, E. G.	40
Shawnee Tire and Repair Co.	40
Southwick Auto Supply Co.	40
Thomas Lumber Co, pages 4, 8, 10, 20, 22.	
AUTOMOBILE DEALERS.	
Capital Auto and Supply Co.	40
Kinley, E. G.	6
BANKS.	
Bank of Topeka	26
Central National Bank	6
Farmers National Bank	28
German American Bank	
Merchants National Bank	10
State Savings Bank	2
Shawnee State Bank	4
Topeka State Bank	12
BUILDING AND LOAN COMPANIES.	
Capital Building and Loan Co.	2
CARPENTERS AND CONTRACTORS.	
Weible, W. R.	10
CARRIAGE AND WAGON MANUFACTURERS.	
Kinley, E. G.	6
CLOTHIERS.	
Badders Clothing Co.	22
COAL DEALERS.	
Shimer, J. C. and Son	32
McCleery Lumber Co.	8
Thomas, J.	4, 8, 10, 20, 22
CREAMERIES.	
Continental Creamery Co.	30

FARM LOANS, MORTGAGES, ETC.	
Ambler, A. S.	20
Bacon, W. C.	28
Betzner, I. L.	16
Blakely, C. G., & Co.	18
Davis-Wellcome & Co.	12
Farm Mortgage Co.	14
Forbes, W. M., & Co.	6
Furman, A. L.	16
Kibbee, H. C.	16
Merriam Mortgage Co.	43
Noble, Geo. M., & Co., see inside front cover.	
Ort, S. S.	
Pioneer Mortgage Co.	10
Seger Mortgage Co.	4
Thomas, F. S.	
Thompson, W. D.	32
Wilson and Neiswanger	22
FEED, SEEDS, ETC.	
Coe, D. O.	6
Hayes Seed House	22
Shimer, J. C., & Son	32
FOUNDRIES.	
Sanders, O. W.	28
FURNITURE DEALERS AND HOUSE FURNISHINGS.	
Emshizer and Spielman Furniture Co.	39
GATES.	
Thomas Lumber Co, pages 4, 8, 10, 20, 22.	
GROCERS.	
Owl Grocers	2
HIDES AND FURS.	
Smith, J. C.	6
HORSE AND CATTLE BUYERS.	
Fisher, Bert.	12
INSURANCE (Fire).	
Batley Bros. and Co.	14
Blakely, C. G.	18
Cottrell, E. E. Co.	

Falkner and Wentworth	14
Forbes, W. M., & Co.	6
Noble, Geo. M., & Co., see inside front cover.	
Rickenbacher, W. J.	4
Seger Mortgage Co.	4
Wilson and Neiswanger	22
INSURANCE (Life).	
Germania Life Insurance Co., see inside front cover.	
North American Life Insurance Co.	24
Union Central Life Insurance Co.	32
LIVE STOCK MARKET (Buyers).	
The Seymour Packing Co.	14
Wolf Packing Co.	18
LIVE STOCK (Fancy Cattle).	
Merriam, C. W. (Alysdale Farm)	31
LIVERY AND SALE STABLES—FEEDING BARN.	
Bigham, V. E.	4
McGuire, W. L.	28
LUMBER AND BUILDING MATERIAL.	
McCleery Lumber Co.	8
Thomas Lumber Co.	4, 8, 11, 20, 22
MONUMENT DEALERS.	
Vermont Marble and Granite Co.	2
NOTARY PUBLIC.	
Bacon, W. C.	38
Henry, R. A.	16
Wilson and Neiswanger	22
OXY ACETYLENE WELDING.	
Elmore Auto Co.	40
Farris, Jesse	8
PHOTOGRAPHER.	
Boeger, C. J., see inside back cover.	
PIANOS AND ORGANS.	
Bell Bros. Music Co.	16
Emshizer and Spielman Furniture Co.	39
Guild, E. B. Music Co.	8

POULTRY SUPPLIES.	
Coe, D. O. & Co.	6
PRODUCE (Wholesale).	
Hayes Seed House	22
PUMPS AND GATES.	
Adams-Adams	24
REAL ESTATE.	
Bacon, W. C.	38
Bailey Bros. and Co.	14
Blakely, C. G.	18
Bowers and Cookinham	20
Cook, S. A.	
Cottrell Real Estate Co.	
Elliott, O. M.	18
Forbes, W. M. & Co.	6
Furman, A. L.	16
Henry, R. A.	16
McGuire, W. L.	28
McLean, J. A.	20
Noble, Geo. M. & Co., see inside front cover.	
Rickenbacher, W. J.	4
Seger Mortgage Co.	4
Squire, C. L.	16
Thompson, W. D.	32
Wilson and Neiswanger	22
Wingett Land Co.	12
SECOND HAND FURNITURE (and new).	
Timon, J. E.	18
SILO DEALERS.	
Continental Creamery Co.	30
Perfection Metal Silo Co.	16
Thomas & Co.	4, 8, 10, 20, 22
Witvor, C. C.	37
TIN AND ZINC WORK, FURNACES.	
Holtman Heating Co.	28
UNDERTAKERS.	
Bomgardner, H. W., see inside back cover.	
Penwell, L. M., see inside front cover.	

INDEX TO MAPS AND DIRECTORIES

Auburn Township Map	25
Commercial Club of Topeka	27
Dover Township Map	13
Directory of Taxpayers 33, 34, 35, 36.	
.....	37, 38

Directory of Automobile Owners	
.....	41, 42, 43
Menoken Township Map	7
Mission Township Map	15
Monmouth Township Map	21

Rossville Township Map	11
Shawnee County Map	3
Silver Lake Township Map	9
Soldier Township Map	5
Topeka Views (churches)	29

Topeka Views (schools)	29
Topeka Views (public buildings)	29
Tecumseh Township Map	19
Topeka Township Map	17
Williamsport Township Map	23

KANSAS STATE HISTORICAL SOCIETY

30
25
100

The
**CAPITOL
 BUILDING & LOAN
 ASSOCIATION**
 TOPEKA
Assets \$2,000,000.

A systematic saving account
 is an anchor to windward

Savings earn 4 to 6 per cent

LOANS on Real Estate
 repayable monthly.

Call for Booklet

*Owl Prices are the
 Lowest in the City!*

QUALITY Guaranteed to Please You
 Weight and Measure "O. K."

OWL GROCERS
 5 Stores

"We Save You Money on Every Purchase"

THE VERMONT GRANITE CO.



**High Grade
 MONUMENTAL WORK**

522 N. Kansas Avenue

Phone 594

TOPEKA, KANSAS

Solicits Correspondence

State Savings Bank

TOPEKA, KANSAS
 S. W. Cor. 6th and Kan. Ave.



All deposits protected under Kansas Guaranty Law
Capital, Surplus and Deposits
\$1,400,000.00



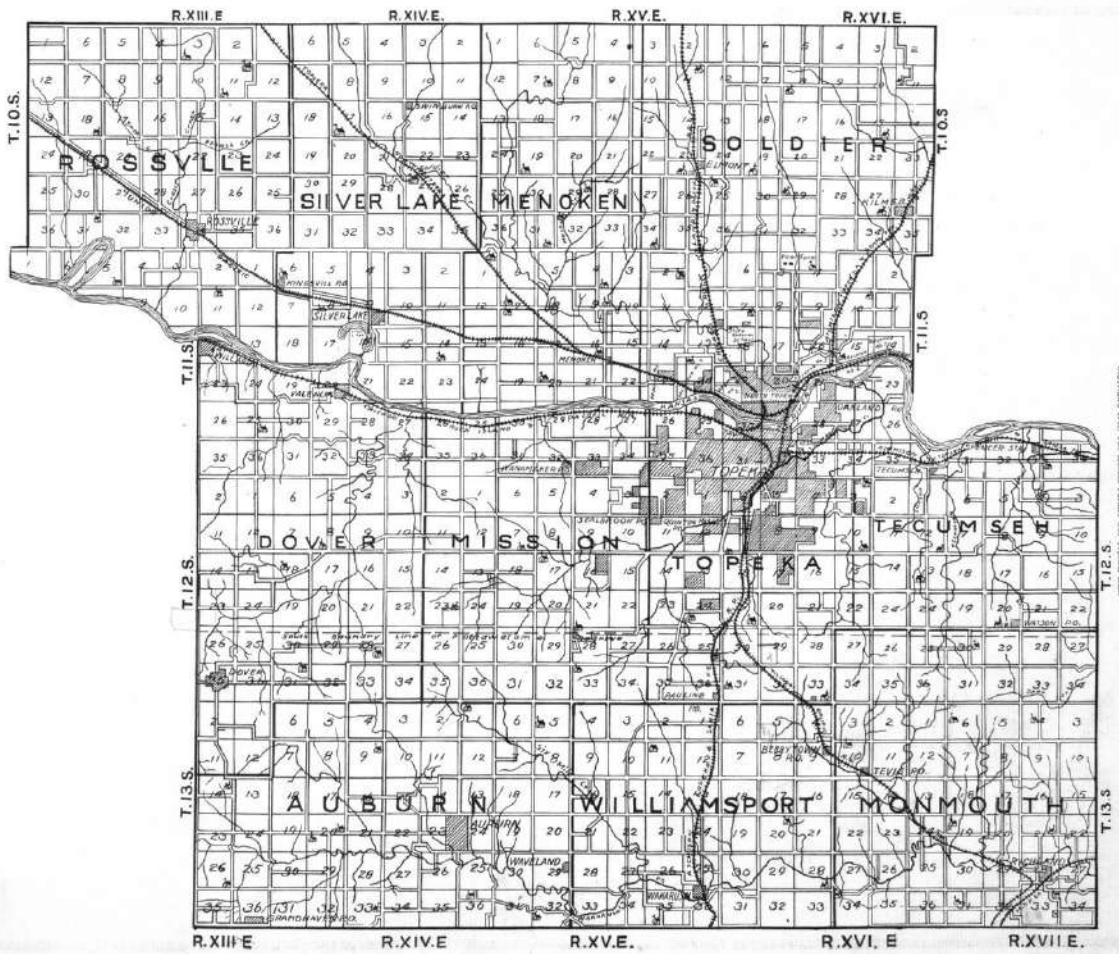
United States Depository

OFFICERS and DIRECTORS

Wm. Macferran, Pres.	N. P. Garretson
E. L. Copeland, V.-Pres.	Dr. C. F. Menninger
J. D. Gossett, Cashier.	A. A. Godard
J. P. Griswold	Dr. S. G. Stewart
Willard N. Hall	F. M. Stahl
M. A. Low	E. C. Arnold
T. F. Garver	A. B. Whiting

Home money to loan. Mortgage, notes, abstract and papers kept at our bank. One mortgage, one note. No commission, rates low. Privilege of payment at any interest paying time.

The State Savings Bank has over 1500 small savings accounts from \$1.00 up. Many farmers and their families are represented in these accounts. The interest is credited every six months and becomes principle whether the depositor calls at the bank or not. The account keeps right on growing; it can be had at any time and every deposit is guaranteed under the Kansas Bank Deposit Guaranty Law. A bank account of this kind is your best friend. The vast majority of people think so. Not a day passes but that some customer draws on his "rainy day" money to meet an emergency or to buy a snap. There are two sides to most questions, but not to this one. Money talks and will as long as the world lasts. We shall be most happy to have your name upon our books. This bank will be just as much your friend if you have a deposit of \$1.00 as if it were \$500.00. Start your children right. Bring your checking account to us. Four per cent on guaranteed certificates of deposit.



MAP OF SHAWNEE COUNTY KANSAS

Copyright, 1911, The Kansas Prairie Co., Topeka, Kan.

S. 217.

T. 13. S.

All Deposits Secured Under
State Guaranty Law

Gives Particular Attention to
Business of Farmers

THOS. PAGE, President. D. J. HATHAWAY, Vice-President.
DAVID BOWIE, Secretary. F. P. ELMORE, Cashier.
A. V. LINDELL, Assistant Cashier.

THE SHAWNEE STATE BANK

North Topeka, Kansas

CAPITAL, SURPLUS AND PROFITS, \$90,000.00.

This is to tell you that we appreciate your banking business, and that it is our purpose to give our patrons good, careful bank service. We want you to feel welcome at all times to call and consult us about anything in the banking line.

We pay interest on time deposits. Combine absolute safety with satisfactory service. A strong bank can accord liberal treatment to its patrons.

Safe Deposit Boxes for Rent.

We Want Your Business.

Seger Mortgage Company

FARMS LOANS **W**ANTED
INSURANCE **W**RITTEN

*Farm and City Property
FOR SALE*

Having had years of experience in the Farm Loan business in Shawnee County and Eastern Kansas, I can offer to borrowers

*The Best Rates and Terms
Obtainable*

Prompt, careful personal attention given to all matters pertaining to loaning money or drawing up deeds, mortgages, contracts, etc. Call at office when in town, or write, and I will call on you, if desired.

E. C. Seger, Manager

102-3 Mulvane Building

(First Floor, Bank of Topeka)

Phone 738

Res. 2087 Blue

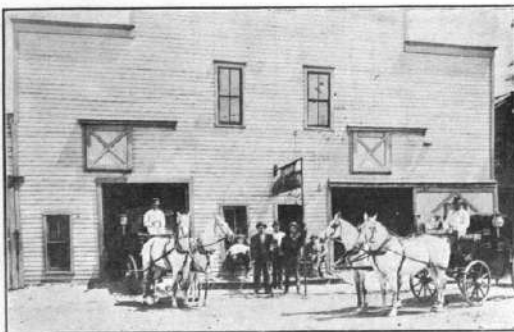
TOPEKA

V. E. BIGHAM

THE LIVERYMAN

The Place that is Always Busy

OPEN DAY AND NIGHT



**First Class Livery
Feed and Hack Barn**

*Good Horses, Good Rigs and Careful Drivers that
know the town and Country.*

RATES REASONABLE

PHONE 22

119-121 W. Norris St., N. Topeka, Kansas

Just One-Half Block West of Citizens Bank in N. Topeka

J. Thomas Lumber Co.

Operating two big yards in Topeka, well stocked with all kinds of Building Material consisting of

Yellow Pine, Fir, Cypress and Oak Lumber

Red Cedar Shingles and Siding

Maple and Oak Flooring

B & S Wall Board

Weatherproof Roofing

Dewey Portland Cement

Ash Grove Lime

Eureka and Eldorado Cement Plaster

SOUTH YARD

213 West Sixth St.

Phones 66-422

NORTH YARD

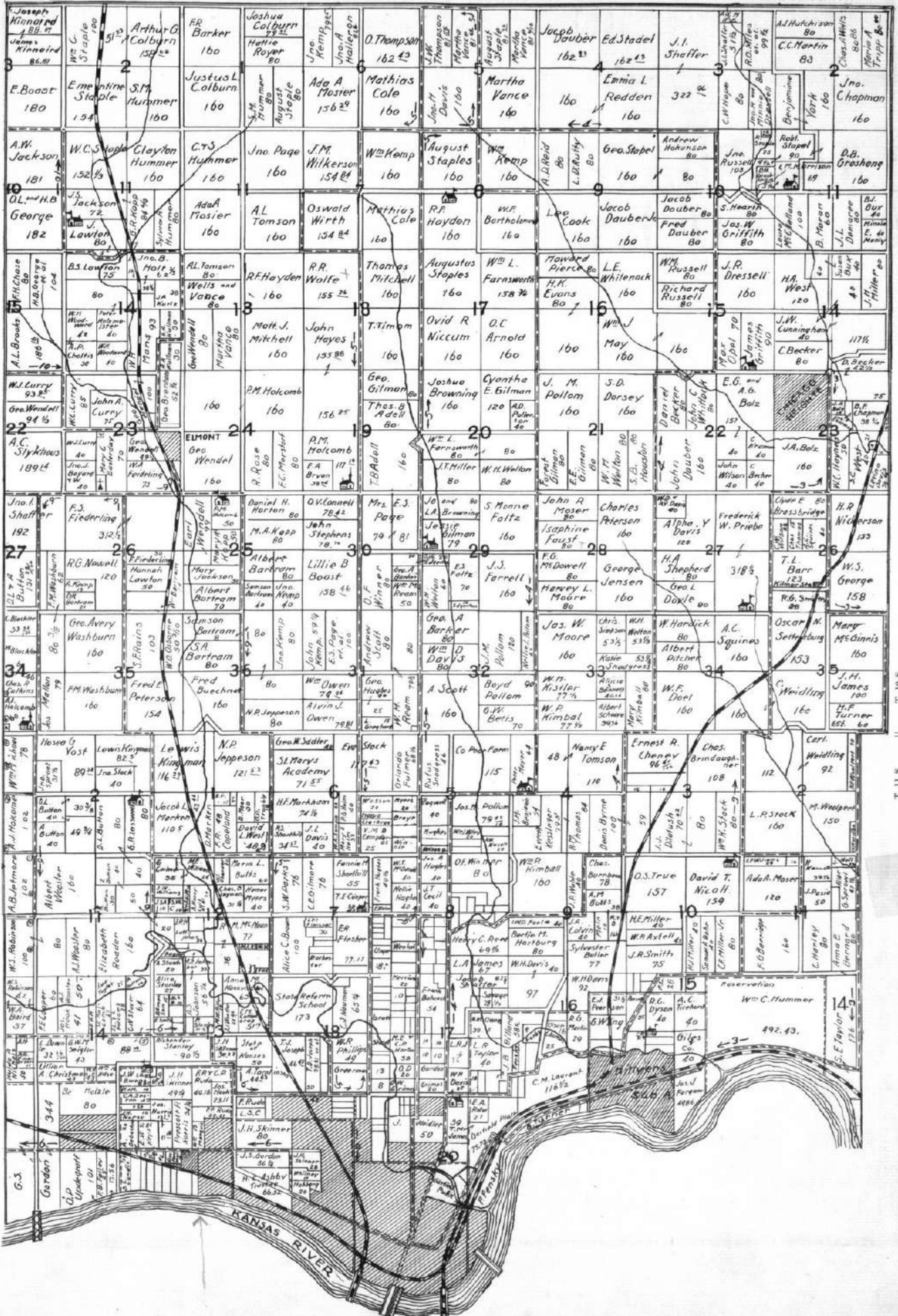
Kansas Ave and U. P. Tracks

Phone 43-W

SOLDIER TOWNSHIP

Parts of Twp. 10 and 11 South, Ranges 15 and 16, East of 6th P. M.
R XV. E || R XVI. E

Scale, 1/4 inch to the mile.
Copyright, 1915, The Kansas Farmer Co., Topeka, Kan.



T. 10 S.
T. 11 S.

W. M. FORBES

F. E. FORBES

W. M. Forbes & Company

INSURANCE
 REAL ESTATE
 CITY AND
 FARM LOANS

SECURITY BUILDING

107 West Seventh Street

TOPEKA

KANSAS

Established 1886

Deposit Your Money
for Safe Keeping

IN THE

Central National Bank

TOPEKA, KANSAS

Capital and Surplus, \$240,000.00

Your Deposits are GUARANTEED in this Bank by the honest and careful management of its active officers, and a close scrutiny of all its business by its Board of Directors.

James C. Smith Hide Co.

T O P E K A
 We Quote Prices in
 Merchants Journal
 and Topeka Dailies
 K A N S A S

Always at Home, 108 East Third St.

D. O. COE

SEEDS
AND
GRAIN

119 East Sixth St.

TOPEKA, : : KANSAS

Established in the carriage business at 424 and 426 Jackson Street in 1882. In the automobile business in 1907. I do a general repair business in carriages and automobiles, such as wood work, blacksmith work, painting and trimming.

Agent for the FORD, the universal car—the car of recognized merit the world over. The output for 1913, 200,000 cars.

Call and see us, get estimates and demonstration.

E. G. KINLEY

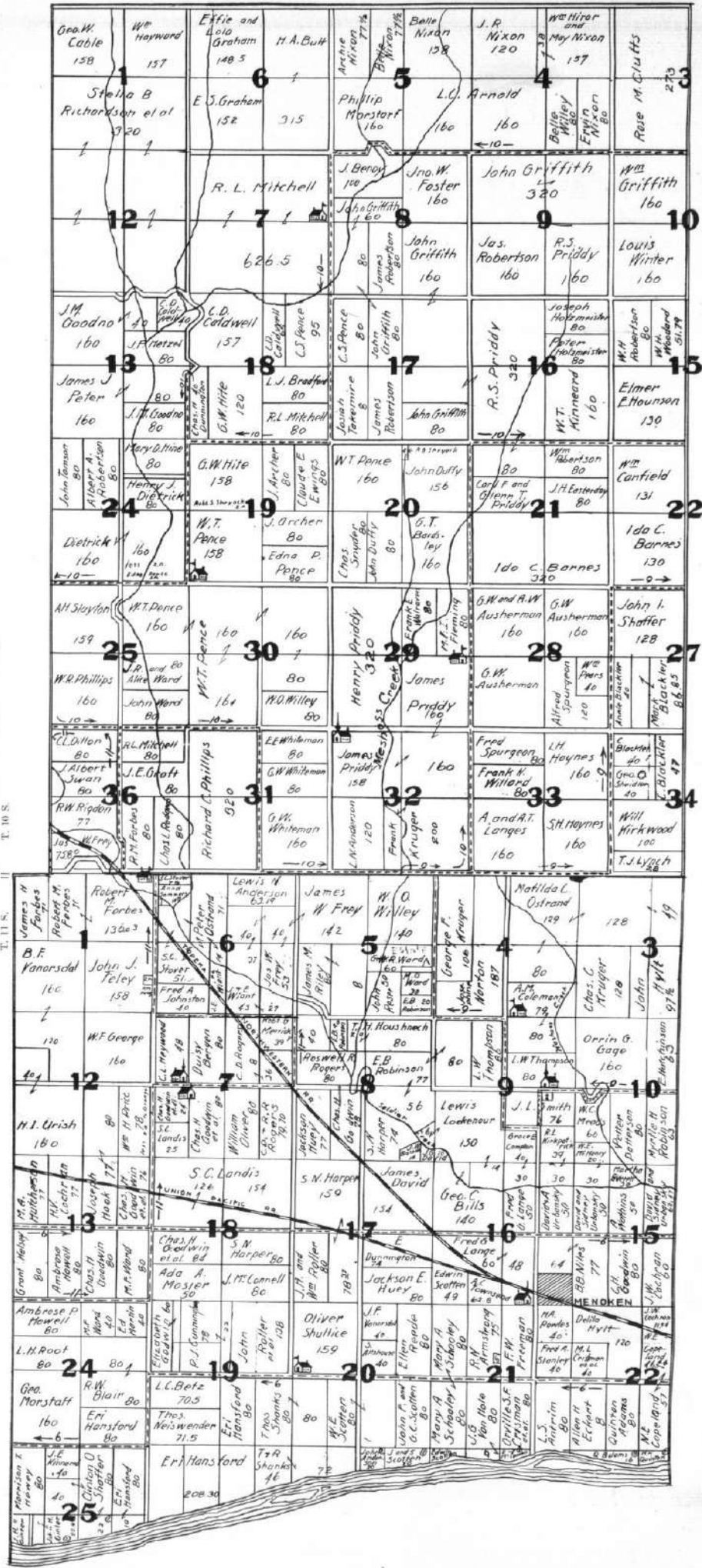
422-426 Jackson St.

Topeka, Kan.

MENOKEN TOWNSHIP

Parts of Twp. 10 and 11 South, Range 14 and 15 East of 6th P. M.
Copyright, 1912, The Kansas Farmer Co., Topeka, Kan.

Scale, 1/4 inch to the mile.



T. 11 S.

T. 10 S.

R. 14 E.

R. 15 E.

Autogenous Welding

The Weld that Holds

Cracked Cylinders, Broken
Crank Shafts, Aluminum
Crank Cases, and all Castings

All Work Guaranteed

GIVE US A TRIAL

Jesse Farris

Phone 3714

1005 Kansas Ave.

THE McCLEERY LUMBER CO.

519 Jackson Street

Coal Phone 866

Lumber Phone 3598 and 3599



LUMBER

COAL

*We furnished the LUMBER and
CEMENT for the Santa Fe's New
Ten Story Office Building.*

WITHOUT FEAR OR FAVOR

We place our grades and services before every individual, whether he be contractor, carpenter or purchasing agent.

PROMPT SERVICE, QUICK DELIVERIES.

We believe that our efforts to serve our customers, with the same courtesy on small and large orders alike, will assure a prompt and emphatic answer to the question, *Is it as good as McCleery's?* We give you quality, service, price. Why look further?

The McCleery Lumber Co.

J. Thomas Lumber Co.

Silver Lake, Kansas

Carry a complete stock
of LUMBER, LATH,
Cement, Lime, Interior
Finish, Brick, Silos, Gates
Rubber Roofing, and a
complete stock of Hard-
ware, Implements and
Automobile accessories.

Let Them Supply Your Needs

Come Here
You Who
Love Good
Music



This store of ours is full of instruments that will interest music lovers.
**Pianos, Player-Pianos, Perforated Music Rolls,
Sheet Music, Victrolas, Victor Records.**

Everything for the man or woman who knows and appreciates good music.

We carry many different makes of pianos—there is one here for you—whether you want a Grand Piano or an Upright, a Piano at \$200 or \$850.

Now of all the excellent makes represented in our stock there is one that we believe is "*Primus Inter Pares*"—"First among its equals."

This is the Knabe Piano, the personal choice of the greatest musical artists of today.

Come in and see what we have to offer, and ask to see a Knabe of the selfsame model as that used by Mary Garden in her own apartments in New York.

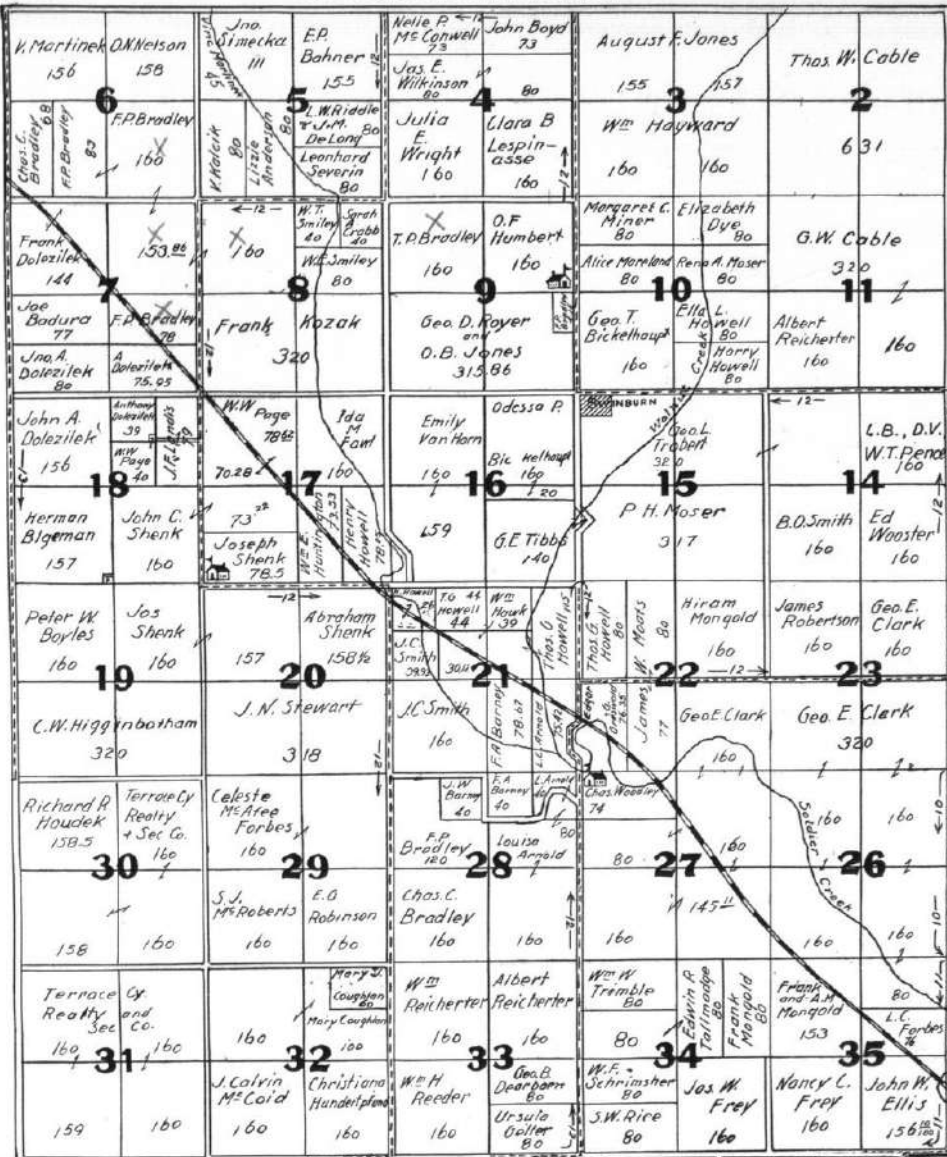
The highest possible value allowed for your old piano taken in exchange. Terms may be arranged to meet your convenience.

Write for handsomely illustrated catalog.

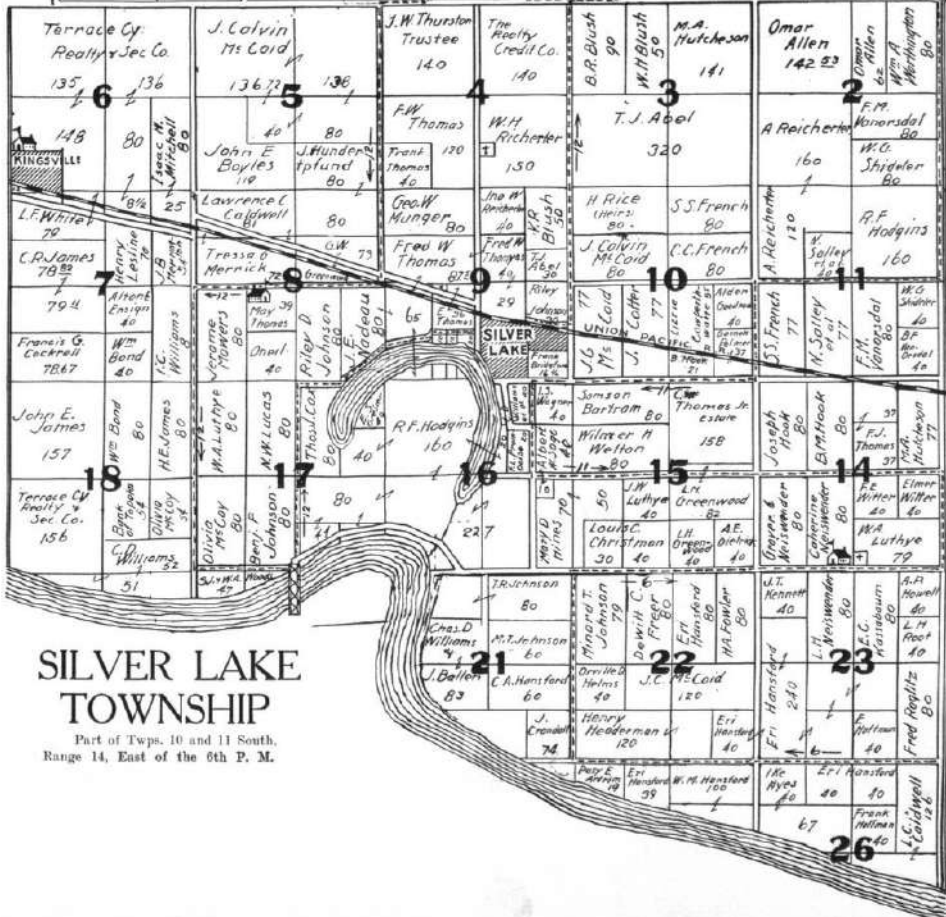
E.B. Guild Music Co.

722. Kans. Ave. Topeka Kans.

Knabe and Story & Clark Pianos.



T. 10 S.
T. 11 S.



SILVER LAKE TOWNSHIP

Part of Twps. 10 and 11 South,
Range 14, East of the 6th P. M.

J. Thomas & Company

ROSSVILLE, KANSAS



Carry a Complete Line of

**LUMBER
LATH
SHINGLES
LIME**

Portland and Plastering Cement

INTERIOR FINISH

BRICK

SILOS

GATES

RUBBER ROOFING

AND ALL GRADES OF COAL

Give them an opportunity to serve you.

W. R. WEIBLE

Contractor AND Builder



I am prepared to furnish estimates on any kind of a house, barn or other building that you may want. I build Silos and feeding barns. My work is my best advertisement and it will please you.

*Call On or Write to Me at
208 West 7th St. Topeka, Kansas*



WE SOLICIT YOUR BUSINESS

The Merchants National Bank

Capital \$100,000.
Surplus \$110,000.

W. A. L. THOMPSON, Chairman of the Board
F. W. FREEMAN, President
F. M. BONEBRAKE, Vice-Prest. & Cashier
J. E. JONES, Assistant Cashier

Cor. 5th and Kansas Topeka, Kansas

UNITED STATES DEPOSITORY
DIRECTORS

W. A. L. THOMPSON
F. W. FREEMAN
ROBERT PIERCE
H. P. DILLON
HORACE L. HALL
F. M. BONEBRAKE
E. L. COPELAND

The Pioneer Mortgage Company

Paid Up Capital \$100,000.00

Surplus - 45,000.00

A. E. VAN PETTEN
President

L. P. ROBINSON
Vice President

ARCH. M. CATLIN
Sec'y and Treas.

M. B. VAN PETTEN
Vice President

402-415 MULVANE BUILDING

Topeka, Kansas

ROSSVILLE TOWNSHIP

Parts of Twp. 10 and 11 South, Ranges 12 and 13, East of 6th P. M.

Scale, 1/4 inch to the mile.

R XII E || R XIII E

Copyright, 1915, The Kansas Farmer Co., Topeka, Kan.



T. 11 S. T. 10 E.

FARM LOANS

Get our Farm Loan proposition, it will interest you. Low interest rate. Especially good option privileges. Loan can be paid off in part or in full on any interest due date.

\$3,000,000. to Loan Annually
No delay in closing

See or write us for further information
Davis-Wellcome Mortgage Company
Stormont Building

107 WEST SIXTH STREET TOPEKA, KANSAS
Telephone 1026

Having had THIRTY FIVE YEARS experience in dealing with Business men and Farmers of this State we have gained a knowledge of your wants, that puts us in a position to handle your banking to the best advantage.

We are never too busy to talk matters over with you. Call and see us.

The Topeka State Bank

8th and Kansas Avenue

Phone 1641

COL. BERT FISHER

Live Stock & Farm Sales Auctioneer
and Dealer in
HORSES, MULES AND CATTLE

I can match any kind of a Real Estate trade.

1035 N. Central Ave. Topeka, Kansas

C. B. WINGETT

W. C. SUMMERS

The Wingett Land Company

SOLICITS YOUR BUSINESS

Farm Lands and Loans
City Property

STORMONT BUILDING

109 West 6th St. Topeka, Kansas

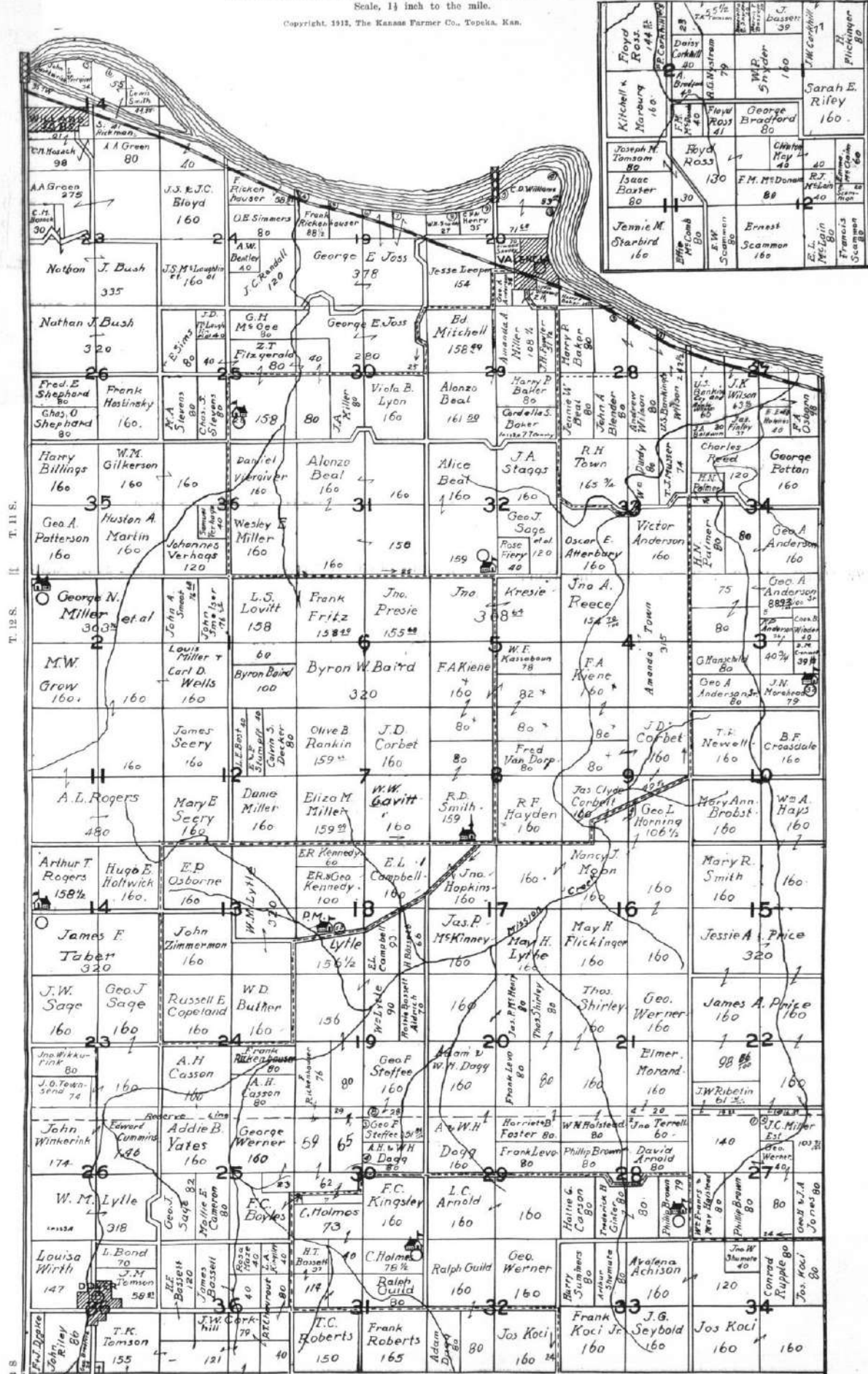
DOVER TOWNSHIP

Parts of Twp. 11, 12 and 13 South, Ranges 13 and 14, East of the 6th P. M.

Joins SW cor. of Twp. as indicated.

Scale, 1/4 inch to the mile.

Copyright, 1912, The Kansas Farmer Co., Topeka, Kan.



T. 11 S.
T. 12 S.
T. 13 S.

Sections 1, 2, 11 and 12 R XIII E || R XIV E
Join here

We will buy all your chickens or eggs at any time at the market price--- We are never overstocked. Visit our plant at the corner of Crane and Kansas Avenue.

THE Seymour Packing Co.

TOPEKA, KANSAS

We Handle the Best Poultry Shipping Coops

The Stockmen's Insurance Company of Topeka, Kansas (MUTUAL)

Incorporated to insure Live Stock, makes a Specialty of indemnifying the loss of Hogs from any Disease or Casualty, including Cholera.

INCORPORATORS AND DIRECTORS.

SCOTT HOPKINS, Prudential Trust Company, Topeka, Kansas.

ARTHUR CAPPER, Publisher, Topeka, Kansas.

G. A. BAILEY, Insurance, Topeka, Kansas.

CHAS. WOLFF, JR., Wolff Packing Company, Topeka, Kansas,

E. H. ANDERSON, Insurance, Topeka, Kansas.

CURTIS S. BAILEY, Insurance, Topeka, Kansas.

CHARLES KLEINHANS, Farmer, Grantville, Kansas.

JOHN C. TULLIS, Farmer, Mechanicsburg, Ohio.

LUTHER C. BAILEY, Insurance, Topeka, Kansas.

BAILEY BROS. & CO., General Managers

106 East 7th Street

TOPEKA, KANSAS

TELEPHONES: 3160, 990.

FALKINER ^A ^N ^D WENTWORTH

**Fire, Tornado and Automobile
Insurance**

We make a specialty of Farm Insurance in the Commercial Union of London, England; the largest fire insurance company in the world, who are noted for their promptness and fairness in making adjustment of losses.

Best automobile policies in two of the best companies at the very lowest obtainable rates.

409 New England Building

Telephone 511-W

TOPEKA, KANSAS.

J. P. SLAUGHTER,
President

W. A. SMITH,
Vice-President & Treasurer

The Farm Mortgage Company

Capital Stock \$100,000.00



Loans & Investments

FARM LOANS A SPECIALTY



Money ready when papers are executed and title is approved.

GOOD OPTIONS

WRITE US FOR RATES



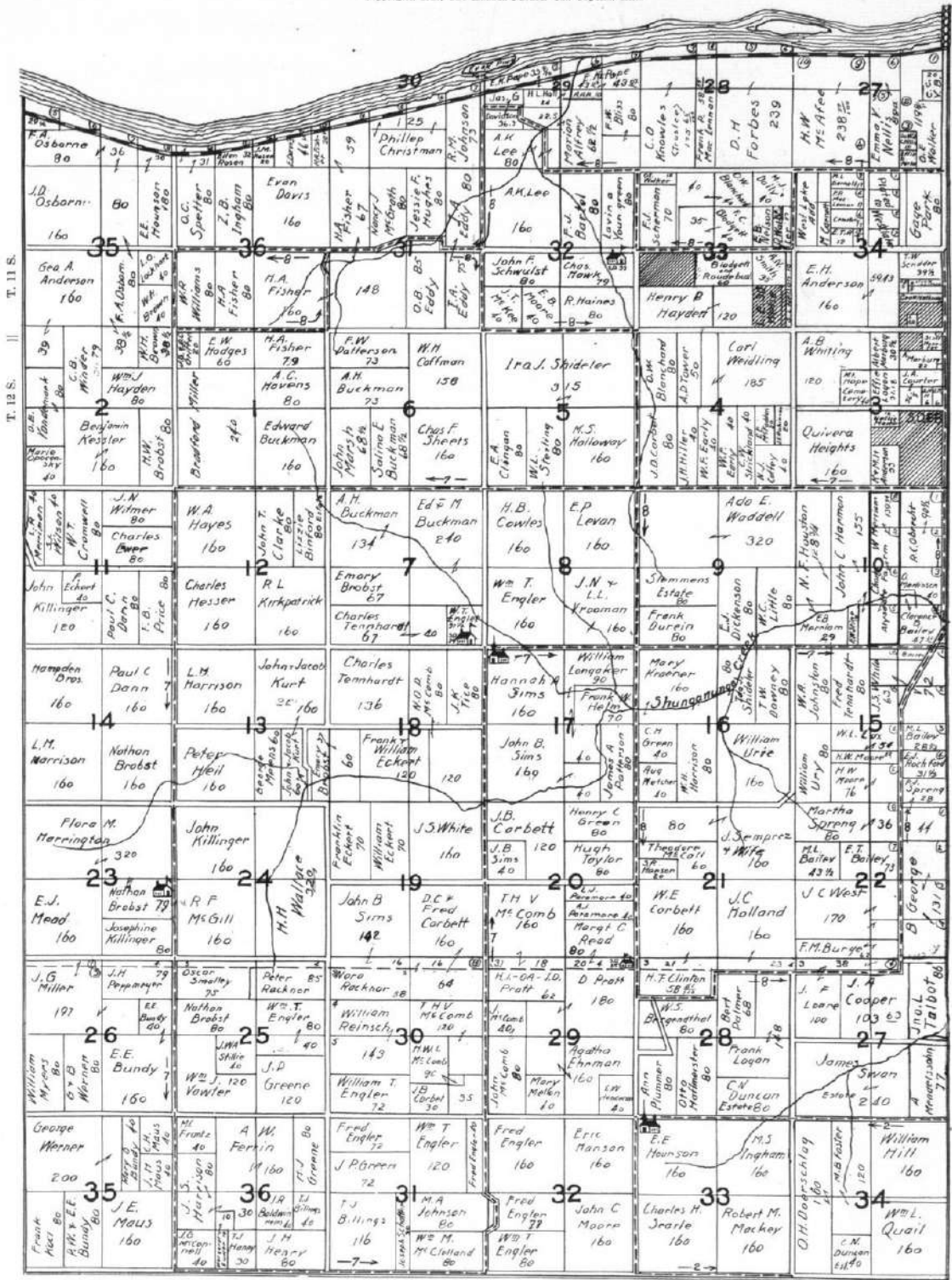
Rooms 301-15 Mulvane Bldg.

Phone 3338

TOPEKA, KANSAS

MISSION TOWNSHIP

Parts of Twps. 11 and 12 South, Ranges 14 and 15, East of 6th P.M.
Copyright, 1915, The Kansas Farmer Co. Topeka, Kan.



R XIV. E || R XV. E

MONEY TO LOAN

5 and 6 PER CENT money to loan on Eastern Kansas farms and on inside Topeka business property, in any amount from \$500 up.

An unlimited amount of money to loan for building homes and on homes already built in Topeka.

If you wish a new loan or have a maturing loan or wish to change your loan, either farm or city, write or call at our office, first floor, New England Building.

Betzer Realty & Loan Co.

A. L. Furman

Real Estate

Investments

Farms and Ranches

Houses and Lots

Farm Loans

Come to me when you want anything in the Real Estate Line. I can suit you.

A. L. FURMAN

811 KANSAS AVE.

TOPEKA, KANSAS



This is the Strong, Tough, Heavily Reinforced Wall

---That Can't Crack, Shrink, Dry Out or Crumble---that is Absolutely Air Tight---Moisture Proof and Trouble Proof---of the tested

PERFECTION METAL SILO

Easy to Erect. No Cutting or Fitting. Interchangeable Sections Bolted Flange to Flange with Square Head Bolts. NO EXPERIMENTS. SEVEN YEARS in use---Proved and Perfect. Heavy Double Flange Formed on Each Section WITHOUT JOINT OR WELD. No Rivets. No Holes Through Silo Wall. Forms Rigid Reinforcement Around the Silo every Two Feet. Vertical reinforcement every seven feet. Proof against all Strains and Big Pressure of Swelling Silage. Absolutely Rigid against Wind. Paid-Up Insurance Against Tornadoes or Cyclones.

5 Year Guarantee

See the PROOFS. Read what Farmers Say. Learn what the Perfection Silo means to YOU.

No. 3

Get the Big New Silo Book---"Turning Cornstalks Into Cash," written by farmers. Full of Dollars and Cents information---FREE. Send today---don't wait. Address on postal card.

Perfection Metal Silo Company
Original and Sole Manufacturers,
207 Mulvane Building, Topeka, Kansas.

NOTE---This is the Silo Chosen by Men of Experience

C. L. SQUIRE

**Loans, Real Estate,
Sale and Exchange
Agent**

632 Kansas Avenue

Phone 3423-W

TOPEKA, KANSAS

Phones, Office, 1608

Residence, 2294 Black

R. A. HENRY
REAL ESTATE

Notary Public

632 Kansas Avenue

Opposite National Hotel

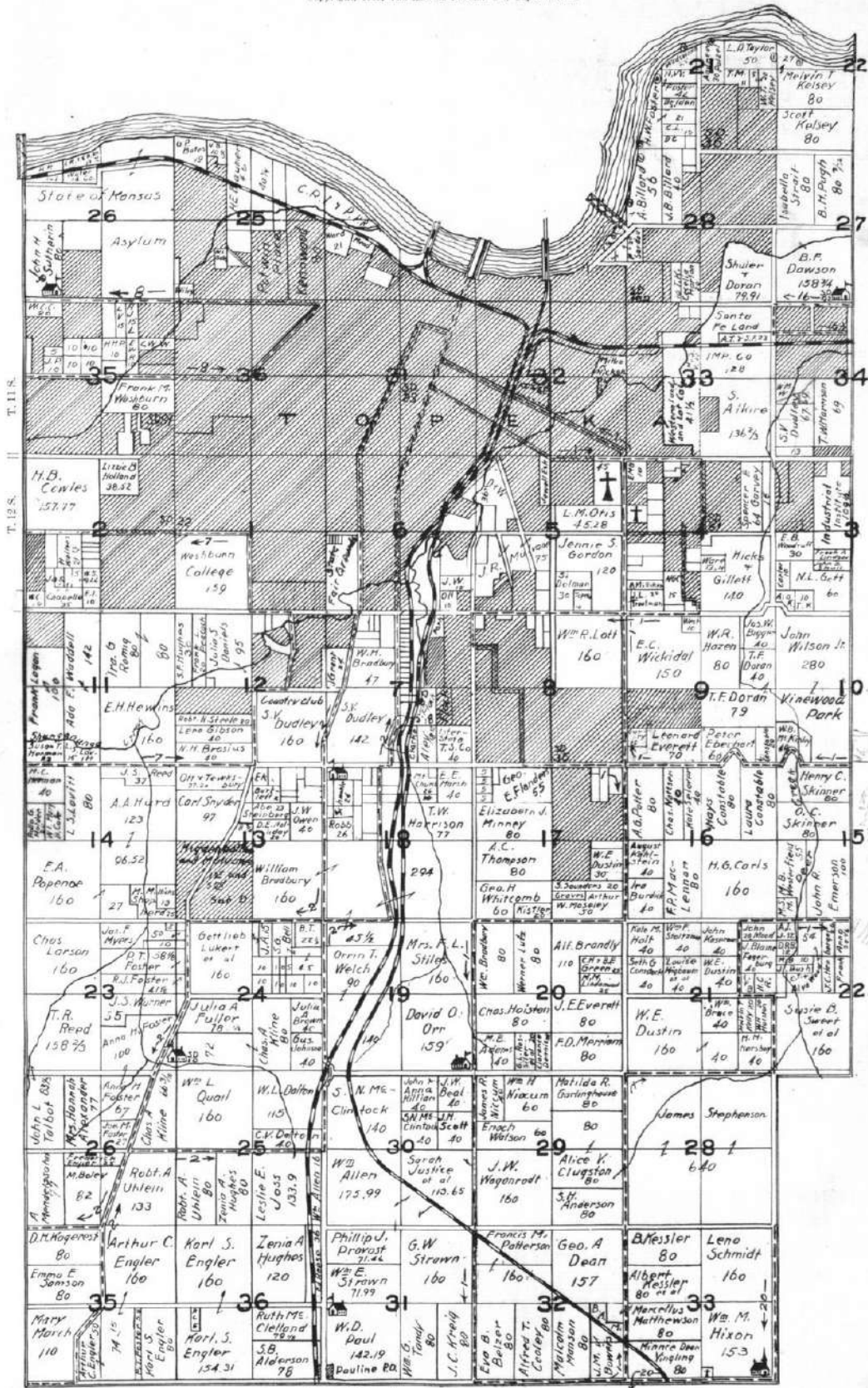
TOPEKA, KANSAS

TOPEKA TOWNSHIP

Parts of Twps. 11 and 12 South, Ranges 15 and 16, East of 6th P.M.

Scale, 1/4 inch to the mile.

Copyright, 1913, The Kansas Farmer Co., Topeka, Kan.



T. 11 S.
T. 12 S.

Committed to be built
Lawrence & Heights
Base of highway road
St. Catherine's
St. Paul's
St. Charles
63, 64, 65, 66
Lawrence
as defined 1913-16

R. 15 E. || R. 16 E.



“Banquet” Hams
Breakfast Bacon
 AND
“O. K.” Lard

Are **QUALITY** products because they are made from the best hogs that we can buy from the Kansas farmers, are fattened on Kansas corn and made in a Kansas institution — a strictly Kansas proposition throughout, isn't it?

Then why not insist on getting these brands?

MADE BY
Chas. Wolff Packing Co.,
 TOPEKA

Get in touch with us before selling your live stock.

CASH OR CREDIT

**North Topeka
 Furniture Co.**

*Household Goods & Store Fixtures
 of All Kinds Bought, Sold
 and Exchanged.*

602-610-612 N. KANSAS AVE.

Just South of U. P. Depot.
 Phone 1763 or send Postal

North Topeka, Kansas

Shawnee County



*We sell and exchange
 Real Estate and Personal
 Property, and make loans*

Exchanges a Specialty



Pioneer Land Co.

521 KANSAS AVENUE TOPEKA, KANSAS

O. M. ELLIOTT, Mgr.

Telephones, Office, 3101, Res., 278

C. G. Blakely & Co.

**REAL ESTATE
 AND INSURANCE**

102 MULVANE BUILDING
 Telephone 738

**City Real Estate and Farms
 For Sale**

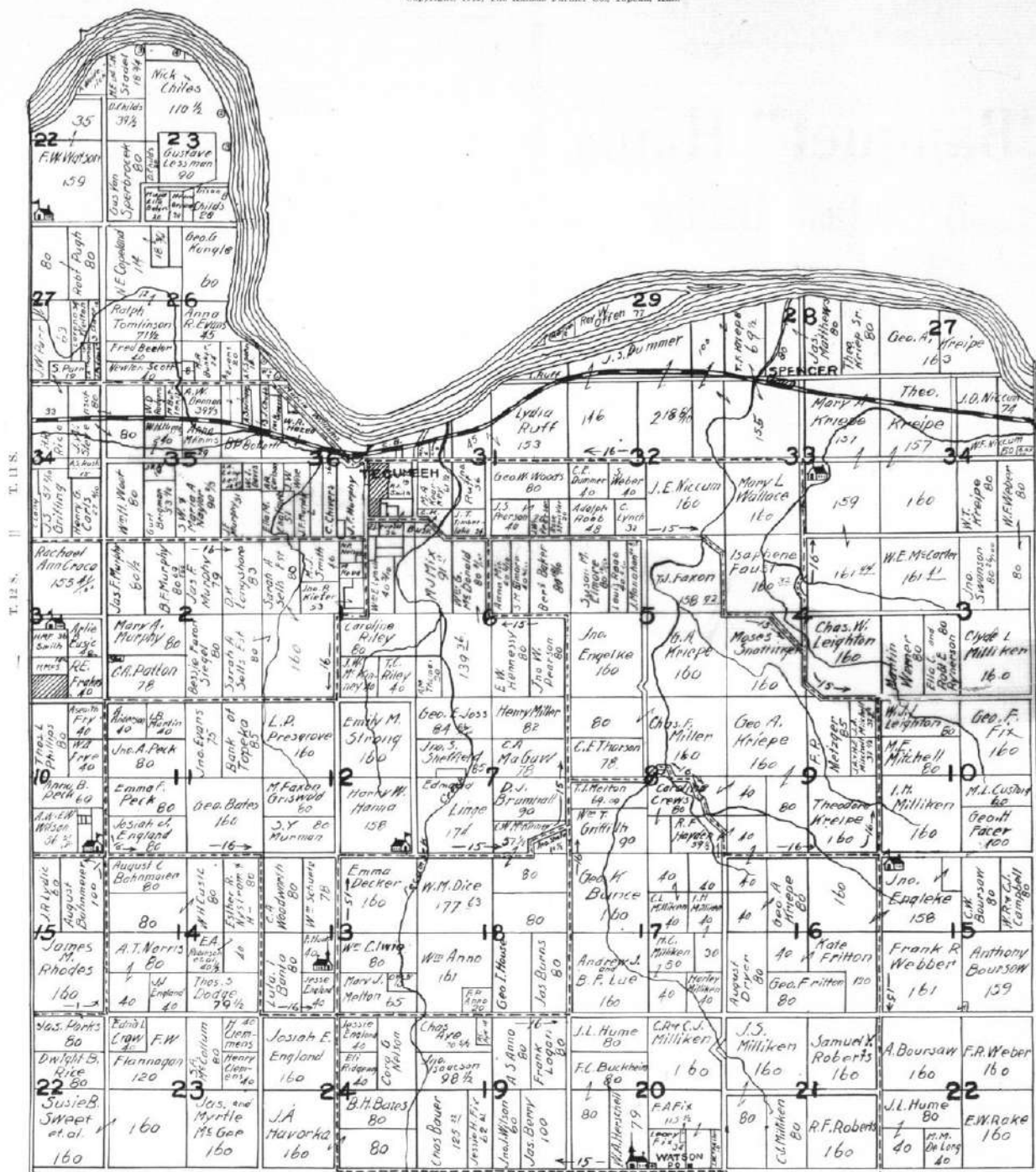
*Insurance against Fire, Lightning and
 Windstorm written. Automobile and
 Plate Glass Insurance a specialty. Only
 strong and liberal Companies repre-
 sented. Should you want a home, a
 farm or insurance, call on us.*

*Patrons of our office go away sat-
 isfied and become our best friends.*

TECUMSEH TOWNSHIP

Parts of Twp. 11 and 12 South, Ranges 16 and 17, East of 6th P.M.

Copyright, 1915, The Kansas Farmer Co., Topeka, Kan.



R XVI E || R XVII E

The Northwestern Mutual
Life Insurance Company has
been loaning on Kansas
farms since 1873. :- :-

A. S. AMBLER
SPECIAL LOAN AGENT

313 New England Building

FIRE INSURANCE

TORNADO INSURANCE

Bowers & Cookinham

**INSURANCE
REAL ESTATE
L O A N S**

TELEPHONE 403W

414 Central National Bank Building

TOPEKA, KANSAS

LIFE INSURANCE

ACCIDENT INSURANCE

I Am A Good Trader

List Your Trades With Me.

During the past three years
I have made a specialty of get-
ting the greatest value possible
out of farms, stocks of merchan-
dise, etc., by the Trade Route.

LET ME KNOW YOUR NEEDS

Farm and City Property For Sale

J. A. McLean

521 KANSAS AVENUE

TOPEKA, KANSAS

J. Thomas Lumber Co.

Berryton, Kansas

Carry a complete stock
of LUMBER, LATH,
Cement, Lime, Interior
Finish, Brick, Silos, Gates
Rubber Roofing, and a
complete stock of Hard-
ware, Implements and
Automobile accessories.

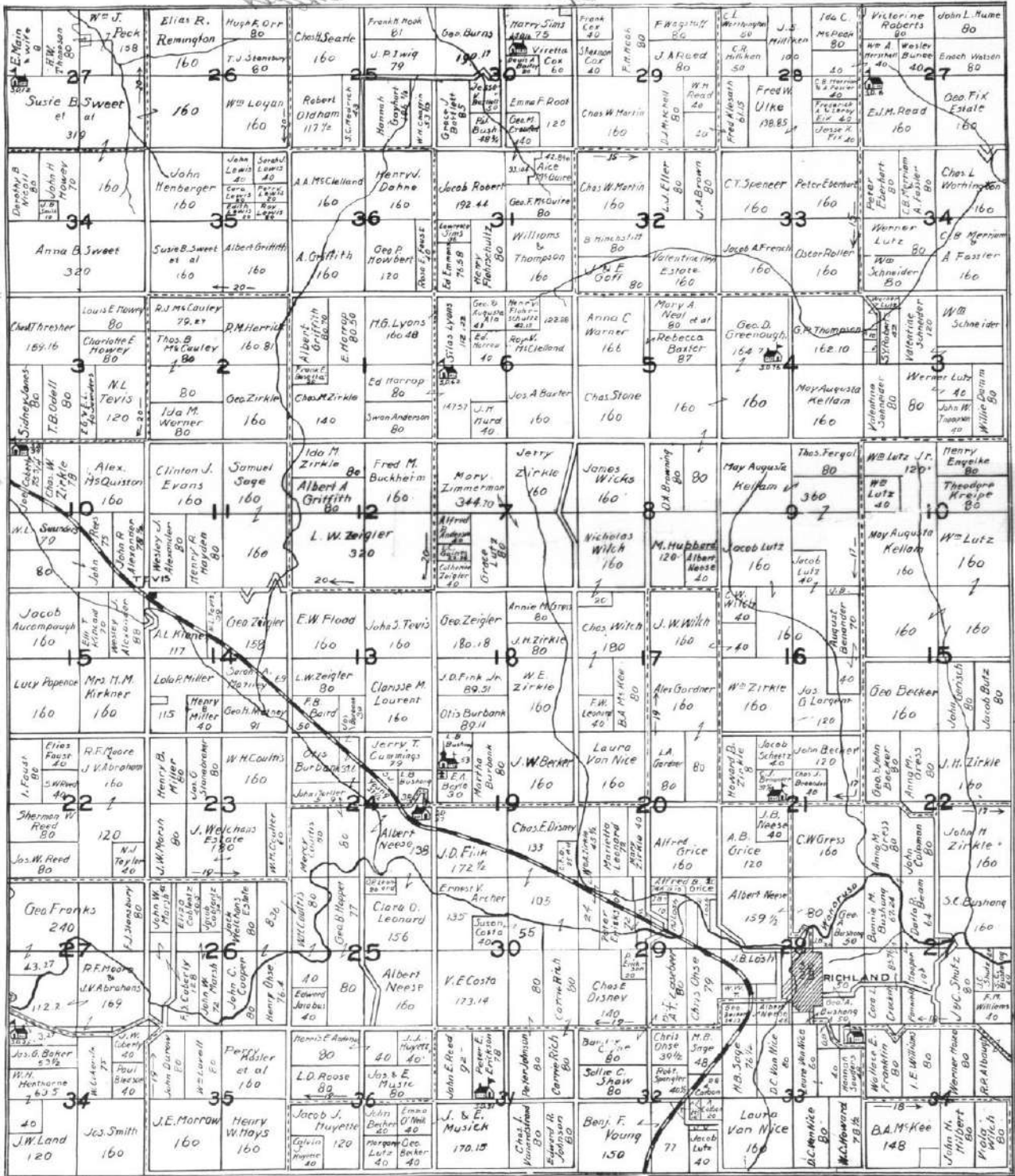
Let Them Supply Your Needs

MONMOUTH TOWNSHIP

Parts of Twp. 12 and 13 South, Range 16 and 17, East of 10th P.M.

Copyright, 1912, The Kansas Farmer Co., Topeka, Kan.

R XVI E || R XVII E



Wilson & Neiswanger

**REAL ESTATE
AND
INVESTMENTS**

Fire, Tornado and Plate Glass **INSURANCE**

Telephone 948

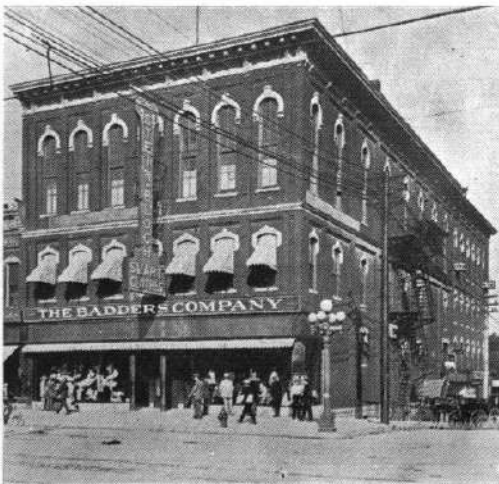
111 West Sixth Street
TOPEKA, KANSAS

J. Thomas Lumber Co.

Wakarusa Kansas

Carry a complete stock of LUMBER, LATH, Cement, Lime, Interior Finish, Brick, Silos, Gates Rubber Roofing, and a complete stock of Hardware, Implements and Automobile accessories.

Let Them Supply Your Needs



The Badders Company succeeded the Marshall Clothing Company and in less than two years by modern honest merchandising has become the leading clothing and men's furnishing store of Topeka.

We will appreciate your patronage.

The Badders Company



GENE HAYES, MGR.

**HAYES
SEED HOUSE**
TOPEKA KANSAS.

LARGEST and BEST STOCK in the City
To Choose From

Get one of our new
Hand Corn Shellers



PRICE **\$1.00** EACH

Given **FREE** with an order
for 2 bushels of Seed Corn

PHONE 1944

524-526 N. Kansas Ave.

Topeka,

--

--

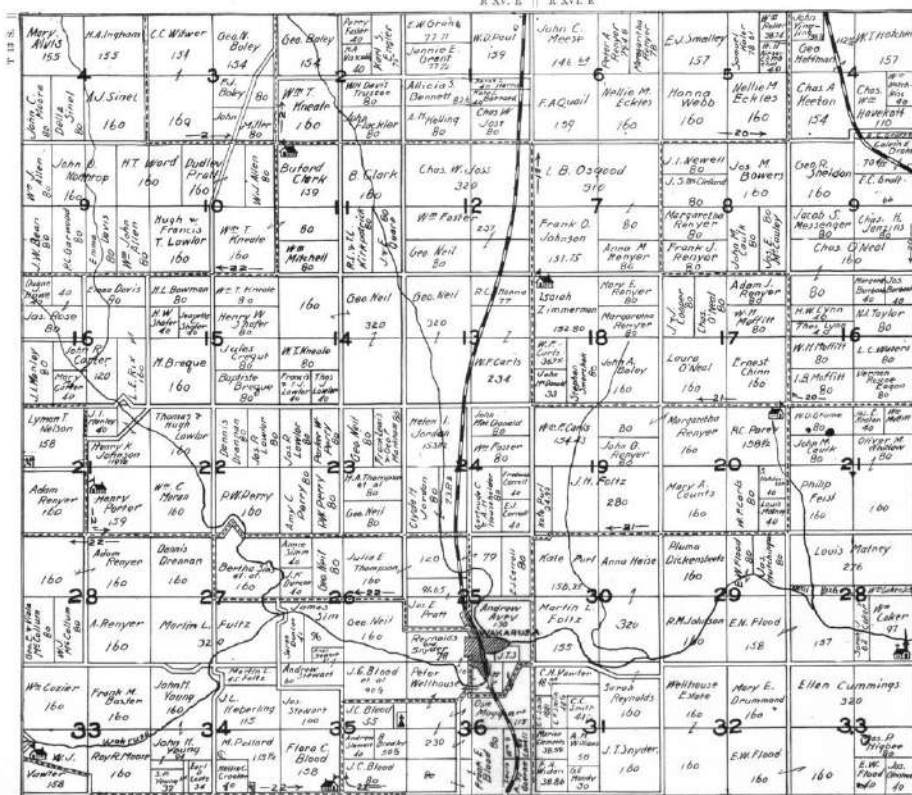
Kansas

WILLIAMSPORT TOWNSHIP

Part of Twp. 13 South, Range 13 East, of 6th P. M.

Copyright, 1913, The Kansas Farmer Co., Topeka, Kan.

R. XV. E. | R. XVI. E.



Is Your House In Order

Listen

If you were to receive a sudden call taking you away from your family for five years, is your financial condition as you would like it to be?

Listen

Some day you are going to be called away and will never come back. Is your financial house in order?

Listen

More than 10,000 men died in the United States last year, who had passed a strict medical examination, and had bought life insurance within one year prior to their death.

Listen

You may be next! Protect those you love with a safe low cost policy in The North American Life Insurance Company.

North American Life Insurance Co.

J. E. SPALDING, State Manager

Phone 5156

Prudential Trust Bldg.

TOPEKA, KANSAS

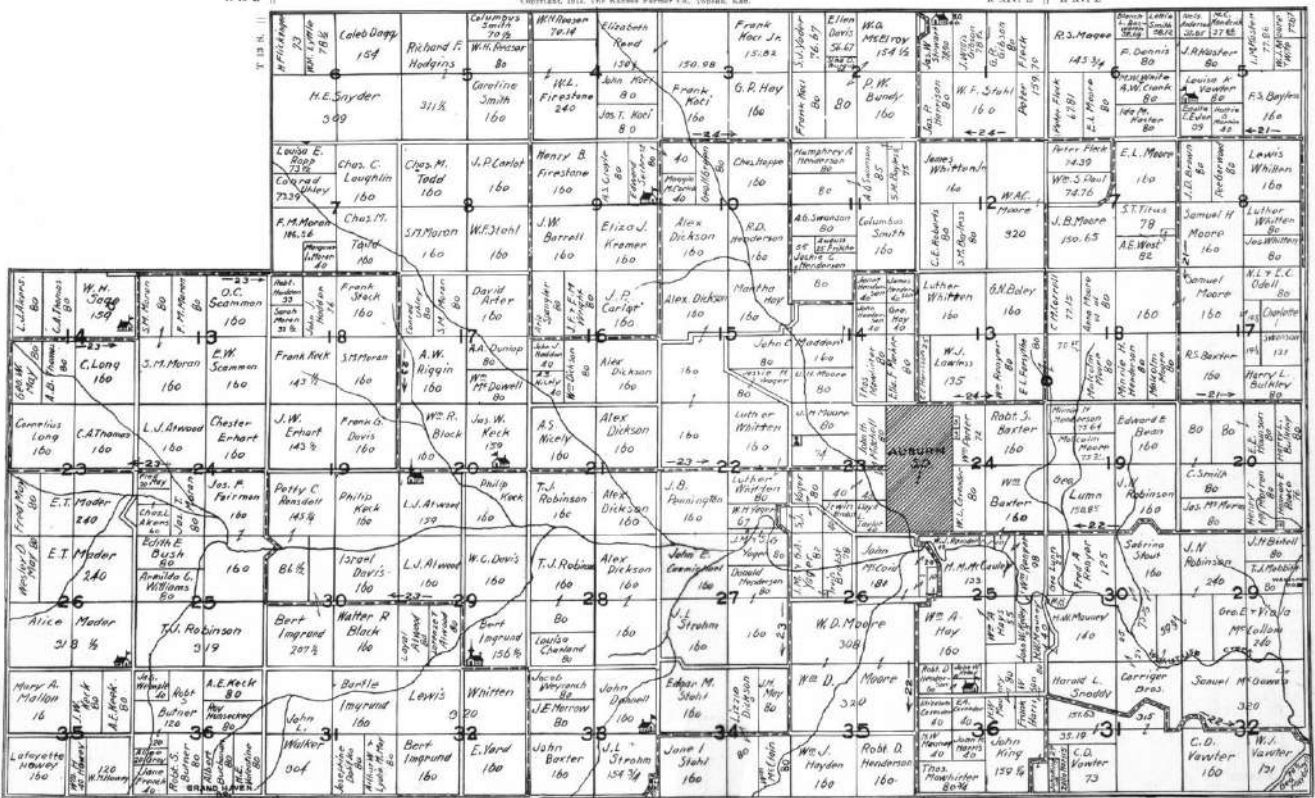
AUBURN TOWNSHIP

Township 13 South, Range 14 and parts of Ranges 13 and 15, East of the 8th P. M.

R 13 E

Copyright, 1911, The Kansas Farmer Co., Topeka, Kan.

R 14 E R 15 E





BANK OF TOPEKA

Under the Bank Depositors' Guaranty Law

Capital and Surplus \$500,000.00

Organized 1866

Incorporated 1868

OFFICERS

J. R. MULVANE, - - - President
 S. E. COBB - Vice-President
 A. W. KNOWLES - Vice-President
 S. F. HUGHES - - - Cashier
 R. H. KNOWLES Assistant Cashier

DIRECTORS

DAVID BOWIE Of the Page Milling Company.
 W. W. BOWMAN Secretary Kansas Bankers' Association.
 S. E. COBB Vice-President.
 F. D. COBURN Secretary State Board of Agriculture.
 W. H. DAVIS President Davis Mercantile Company.
 SCOTT HOPKINS President Prudential Trust Company.
 A. D. KENDALL President Kendall State Bank, Valley Falls, Kan.
 A. W. KNOWLES Vice-President.
 M. A. LOW Attorney and Capitalist.
 JUDGE LEE MONROE Attorney and Capitalist.
 JOAB MULVANE Capitalist.
 J. R. MULVANE President.
 CHAS. WOLFF President Chas. Wolff Packing Co., Topeka, Kan.

This successful bank solicits your business. Our large resources have enabled us to help build up your most prosperous enterprises. Our people are your people.

The Prudential Trust Company, affiliated with this bank, is recommended as executor for your will and trustee for matters in its line.



A VIEW OF KANSAS AVENUE, TOPEKA—THE SHOPPING CENTER OF KANSAS

TOPEKA, the County Seat of Shawnee County, the Capital of the State of Kansas, has a population of over 50,000 people. Situated as she is, in the midst of a vast agricultural district, naturally her development and expansion has been the result of the increased efficiency employed and the increased productiveness of the lands of the State of Kansas; and in return Topeka has endeavored to maintain for that vast area of rich agricultural territory a reputation as a buying and selling market unequalled by any other city similarly situated in the country.

Shawnee County, one of the most favored counties in the State, in the matter of rainfall and fertile productiveness of the soil, has a wonderful advantage in having such a market for both buying and selling things needed and produced from the farm.

The greater portion of the population of Topeka are wage earners; producers of something; honest toilers and large consumers, and the job of feeding and taking care of and supplying the needs of the City of Topeka devolves largely upon the Shawnee County farmer and produce grower.

While Topeka is primarily an agricultural city due to its environment, yet by reason of its unusual shipping advantages Topeka makes considerable pretense as a jobbing and manufacturing center. Three trunk line railways permeating all sections of the West and Northwest, South and Southwest, and connecting with the trunk lines permeating the eastern portions of the

United States, afford shipping opportunities almost as good as can be had in any other city in the entire country; and appreciating the advantages that such transportation facilities afford, Topeka has made wonderful progress as a manufacturing and jobbing center.

In the eight years from 1904 to 1912 the manufacturing institutions increased 51 per cent in number. In 1904 Topeka industries employed 3,953 people; in 1912, 7,890, showing a gain of over 100 per cent in the "Bucket Brigade," which is the brain and sinew upon which the stability of every good American city must rest in a greater or lesser degree. Added to this the hundreds and thousands that work in the offices and in the retail stores and other like places of employment, we have a vast army of over 10,000 working people who are consumers and create the market that makes the growing of agricultural products and of produce, poultry and live stock a profitable business in Shawnee County.

A resident of Shawnee County has every reason to feel gratified at his geographical location. To live in the same county in which Topeka is located is a pleasure, but to live in the same county in which the Capital of the State of Kansas is located is considerably more a pleasure, for naturally the Capital of the State becomes the political, financial, educational and social center of the entire State; and Topeka has lived up to that requirement, with her fine public school system, excellent colleges, numerous churches, beautiful State Capitol and other State institutions, and the regard that her citizens have for the comfort and convenience of those who visit within her gates, Topeka creates in the minds of those who have once visited within her borders a desire to come again, and for those who live within her borders a desire to never leave.

As the financial center of the State, Topeka's rights stand unquestioned. Nine large banks with combined deposits of \$10,000,000; capital and surplus, \$1,670,000. Several large life insurance companies. The home of the Knights and Ladies of Security. Three Building and Loan Associations in Topeka with total assets of nearly \$7,000,000. Four large mortgage loan companies with a total capitalization of \$450,000, and numerous other investment and financial companies, place Topeka in the foreground as a financial center.

Great opportunities are offered to the agriculturalist locating in Shawnee County to engage in general farming, truck raising, poultry and eggs, live stock, dairying, fruit raising, bees, and in fact any line of agricultural pursuit, and has a large and ready market at its very door in Shawnee County.

Topeka has three creameries, one of which is among the largest in the world; a large hog and cattle packing house selling over \$3,000,000 worth of products each year; six flouring mills with a daily capacity of over 3,600 barrels; two egg and poultry produce packing houses, one of which is the largest in the entire country, shipping the product from the poultry farms of Shawnee County and the State of Kansas to the entire world, and helping supply the tables of the "effete" East with the choicest edibles that the land produces; some half dozen wholesale fruit and produce commission houses which buy the products from the Shawnee County farmers and sell it again to the consumers in Topeka and ship the balance to the other less favored spots of the country. The commission houses in Topeka sold over \$3,000,000 in vegetables and fruits in 1912 and shipped produce into Oklahoma, Nebraska, Texas, Illinois, Iowa and Minnesota.

Pickling and preserving works give an additional market to the truck grower for his product. All these are growing industries and as the farmers of Shawnee County learn more about the advantages of the convenient market which they possess these institutions will continue to grow and prosper and in return help the farmer grow and prosper.

While Topeka as a city belongs to the entire State of Kansas, yet it is the "city home" of all Shawnee County, and there is not a citizen within this great, large county who does not entertain the same spirit of civic pride for the future growth and development of his city as that entertained by the man who lives on the paved streets and car lines within the corporate precincts of Topeka.

When the roads are ultimately improved, as they will be within the next year or two, Shawnee County will practically be one boulevard system leading out from Topeka, and the farmer who lives eight or ten miles from the city will be brought so near to the city itself that rural life will be offered all of the advantages that are now given to the people who live in the city proper.

The Commercial Club of Topeka and all of the citizens of the city are extremely interested in the development of a uniform system of good roads that will make every section of the country easy of access to the city, so that the city resident can conveniently reach the country districts and so that the rural resident may market his produce with much less difficulty than has prevailed in past years, and can more frequently visit the county seat. The same co-operative spirit that has obtained between the rural and the city population is bound to make Topeka the cynosure for all eyes of the entire State.

J. WILL KELLEY,
Secretary Commercial Club.

*Our Steady Growth
Tells Its Own STORY*

—
*Let
Us
Serve
You*
—

The Farmers National Bank

Topeka, Kansas

CITY IRON WORKS

O. W. SANDERS & CO.

Horse Shoeing Wagon and Plow
Work and General Repairs

*FIRE ESCAPES
RAILINGS
TRELLICES
ANGLES
ANCHORS*

*FENCES
GRATING
BEAMS
TEES
STIRRUPS, etc.*

We make Anything of Iron or Wood

*If you are short of money,
bring your old iron to help
pay the bill.*



W. L. McGUIRE & CO.

General Livery

**HORSE MARKET
Buy and Sell**

*Exclusive Agent for the J. L. Clark Buggies
and Light Wagons.*

**Deal in Real Estate
Exchanges of all Kinds
Rent Properties**

PHONE 477

1014-16 Kansas Ave.

Topeka, Kansas

Kansas City

Topeka

St. Joseph

A. Holtman Heating Co.

Western Agents for

The Favorite Furnaces

**Steam and Hot Water Plants
Laundry Dryer & Dry Closets
Schools, Churches and Residence Heating**

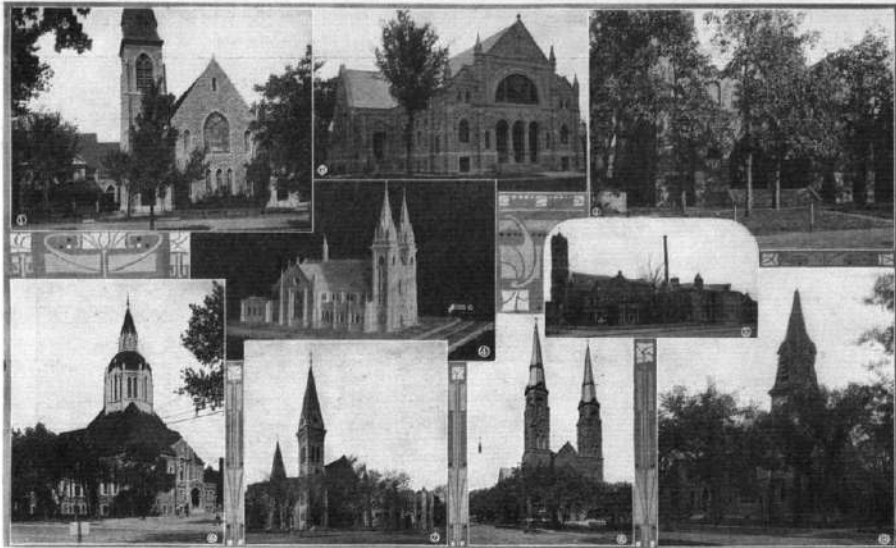
All Kinds of

Galvanized Iron & Tin Work

SATISFACTION GUARANTEED

Office and Ware rooms, 621 Quincy Street

TOPEKA, KANS.



1 First Presbyterian.
2 Central Congregational.
3 First Christian.

4 Grace Cathedral.
5 Church of the Assumption (Catholic).
6 First Baptist.

7 First Methodist Episcopal.
8 St. Joseph Catholic Church.
9 First Congregational.



1 High School.
2 Summer School.

3 Manual Training School.
4 Quincy School.

5 Central Park School.
6 Van-Buren School.



1 Commerce Building.
2 Elks Club.

3 Y. M. C. A.
4 Y. W. C. A.
5 E. R. Y. M. C. A.

6 Country Club.
7 Topeka Club.



The
**HINGE-
DOOR**
Most Important
Feature
Recent Silo
Construction.

**Quality
Strength
Durability**

BEST SILO
Money will Build

The Continental Creamery Company, from a small beginning in a small building on Jackson Street in the City of Topeka a number of years ago, now owns and occupies its present magnificent plant at Second and Polk Streets, with a total floor space of 100,000 square feet. To this plant cream is shipped from all over Kansas, for which thousands of dollars are paid to the Kansas farmers monthly. The Continental Creamery Company were pioneers in the creamery business in

Kansas. With their advent and through their enterprise in the manufacture of high-grade butter, which found a ready market in all parts of the country, the days of 5-cent and 6-cent country butter, representing arduous toil on the part of the farmer's wife, became but a memory. To this plant also thousands of Kansas eggs are shipped each month, for which thousands of dollars are paid, which has done much to make the hen a profitable part of Kansas farm life.

**AN INVESTMENT
THAT WILL PAY 100
PER CENT DIVIDEND
EACH YEAR.**



The Beatrice Cream Separator

THE CREAM STATION PLAN.

For the convenience of patrons, the Company has established Cream Stations in almost every town in Kansas. At these Cream Stations the highest possible prices are paid for butter-fat. The cream is sold to the Company through a "home man" who is appointed the Company's representative, and who handles the cream throughout—weighing and testing it, washing the farmer's can, and paying him cash for the cream. This local representative handles this business under a license for competency issued by the State of Kansas. Cream may be delivered to one of these Cream Stations at any time and in any quantity.

THE DIRECT SHIPPING PLAN.

The Company's Direct Shipping Plan furnishes a ready and reliable market to farmers who do not have the advantage of a good cream station in their town or for any reason do not wish to sell cream through the Station. The plan is simple and effective, consisting merely of a direct "from farm to factory" system. The farmer takes his can of cream to the depot and the agent bills it out, and the Company does the rest. Or farmers living close to Topeka may deliver their cream at the Company's plant at Second and Polk Streets any hour of the day and any day in the week. Upon request, the Company will explain the direct shipper plan in detail.

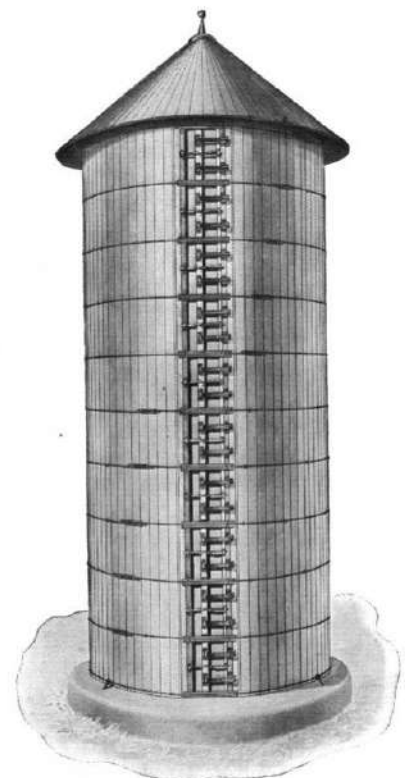
MARKET FOR WHOLE MILK.

Farmers living within reasonable driving distance of Topeka may avail themselves of as good a market for whole milk as can be found in the country. The Company is able to pay very high prices the year round for this whole milk, and they invite farmers who wish to learn more about this excellent whole milk market to drop them a card or to telephone.

CREAM SEPARATORS.

With the advent of the hand separator the Company undertook to supply farmers in need of separators with machines on reasonable terms, arranging for these separators with manufacturers of machines then on the market. Realizing the demand and the need of a substantial and reliable separator that could be sold to farmers at a reasonable price, however, the Company of late years designed and is manufacturing its own separator—the BEATRICE CREAM SEPARATOR. This decision was arrived at through the fact that farmers felt that they were unable to invest in a cream separator as much money as was and is being asked by manufacturers of so-called "standard makes"; while they realize the unreliability of the cheaply-constructed mail-order house machines. The Beatrice Separator, therefore, fills a long-felt want. It is constructed of the very best material and is absolutely guaranteed by this reliable Company for durability and efficiency. The Beatrice saves the farmer from \$25 to \$40 on his separator, as the following low prices indicate:

- Beatrice No. 42, capacity 600 lbs. per hour . . . \$55.00
- Beatrice No. 47, capacity 800 lbs. per hour . . . 65.00
- Beatrice No. 52, capacity 1000 lbs. per hour . . . 75.00



Kansas Hinge-Door Silo

THE CONTINENTAL CREAMERY COMPANY, TOPEKA, KANSAS

ALYSDALE FARM

Chas. W. Merriam

COLUMBIAN BUILDING
TOPEKA, KANSAS

PHONES

Office 407 House 3292 Farm 878 K 4

ALYSDALE SHORTHORNS

Fine Herd of Well Bred and Meritorious Animals. Headed by the Great Scotch Sire VIOLET'S LIGHT 367948 Son of SEARGHLIGHT 292031. Many intelligent breeders, stockmen and farmers are filling their wants from this fine herd of shorthorns at moderate prices. ALYSDALE FARM three (3) miles Southwest of Topeka.



FARMERS of SHAWNEE

We are constantly in the market for the Farm products also have for sale, such things as you need and buy every day.

Flour *Feed*
Coal *Salt* *Etc.*

Call us up when you want to buy or sell at the old stand.

1815 KANSAS AVENUE

Phone 471

J. C. Shimer & Son.

The Union Central Life Insurance Co.

The Great Annual Dividend Company
TALLEST OFFICE BUILDING OUTSIDE OF NEW YORK CITY. Cincinnati, Ohio.

Jesse R. Clark, President.



New Home Office Building.

\$348,000,000 Insurance in Force.
\$93,000,000 ASSETS
\$73,279,000 Invested in First Mortgage Loans on Real Estate.
\$9,308,550 Loaned on the Best Farms in Kansas.

For an Agency or information regarding lowest NET COST Insurance, address,

O. J. DUTTON, General Agent

Phone 3273

923 Kansas Avenue,

Topeka, Kansas.



Factory Branch Store of
BELL BROS. MUSIC CO.

Where pianos are sold on the ONE PRICE TO ALL, basis, that, the lowest price possible

BELL BROS. MUSIC CO.

Topeka's Only One Price Piano House

904 Kansas Ave. Phone 3484 TOPEKA, KANSAS

Automobile No. 566

Phone No. 4165

Reference

The German American
State Bank, Topeka, Kans.

W. D. THOMPSON

**REAL ESTATE, LOANS,
AND EXCHANGES**

123 West Seventh Street

TOPEKA, KANSAS

Economy Security Fraternity



Whether you live in a Sod House
or in a Mansion

Get your Insurance at Cost
and Save Dollars.

By Insuring in

The Alliance Co-Operative Insurance Company

The Only Fire Insurance Company in Topeka

Seventeen years old

Eight thousand policy holders

Twelve Millions of Insurance
in force.

Losses paid, ONE HUNDRED
SIXTY THOUSAND
DOLLARS.

Dividends to members,
TWENTY THOUSAND
DOLLARS.

Seventy-Five Thousand Dollars
Cash and Invested Reserve.

Call, Write or Phone The

Alliance Co-Operative Insurance Company

Rooms 214-216 Central National Bank Bldg.

TOPEKA

Responsible Agents Wanted in Unoccupied
Territory.

Stewart, J. W., Auburn, 24.
Stewart, Katie A., Wakarusa, 22.
Stewart, L. L., Topeka, 1.
Stewart, S. F., Topeka, 7.
Stiles, Geo. G., Topeka, 1.
Stiles, Mrs. May, Rossville.
Stine, F. W., Topeka, 7.
Stitt, W. A., Willard.
Stitt, J. F., Topeka, 7.
Stock, Edwin, Auburn, 23.
Stock, Joseph, North Topeka, 5.
Stock, L. F., North Topeka, 3.
Stockman, Theo., Rossville, 14.
Stambaugh, F. M., Topeka, 7.
Stone, F. L., Willard.
Stone, F. W., Silver Lake, 11.
Stone, George, Topeka.
Stone, Robert, Topeka, 7.
Stonczaker, J. G., Richland, 19.
Stout, M. F., Wakarusa, 21.
Stover, C. R., North Topeka, 6.
Stover, C. W., North Topeka, 6.
Stover, G. F., Elmont, 9.
Stover, Mary, Silver Lake, 11.
Stover, R. H., North Topeka, 6.
Straily, C. J., Topeka, 8.
Stratton, A. L., Topeka, 1.
Strawn, Geo. W., Topeka, 1.
Strohm, J. L., Auburn, 23.
Strong, T. D., Tecumseh, 16.
Stuart, W. C., Topeka, 2937 West St.
Stumbaugh, S. F., Rossville.
Sturm, A. V., Wakarusa, 22.
Suddarth, B. R., Topeka, 1.
Suggs, J. S., North Topeka, 4.
Sumey, W. H., Berryton, 20.
Summers, Harry, Topeka, 7.
Sumpster, A. J., Hoyt, Star Route.
Sutherland, John Jr., Topeka, 8.
Sutherland, John, Topeka, 8.
Sutton, J. M., Silver Lake, 11.
Swan, A. R., Topeka, 2.
Swan, H., Topeka, 1.
Swan, J. Albert, Silver Lake, 11.
Swan, J. Albert, Admr., Silver Lake, 11.
Swan, J. E., Pauline.
Swan, Jas. (Estate), Topeka, 8.
Swartz, N. R., Topeka.
Sweangon, W. T., Valencia, 25.
Sweet, T. B., Topeka.
Sweet, T. B., Topeka, 1.
Swenson, J. G., Topeka.

T

Taber, J. F., Willard.
Takomira, Josiah, Elmont, 10.
Takomira, L. B., Silver Lake, 12.
Talinferro, V. C., Topeka, 1.
Tamblyn, David, North Topeka, 5.
Tanner, C. W., North Topeka, 3.
Taylor, A. G., Tecumseh, 16.
Taylor, Chan, Topeka, 6.
Taylor, Clark, Tecumseh, 15.
Taylor, D. W., Topeka, 6.
Taylor, L. R., North Topeka, 3.
Taylor, L. L., Auburn.
Taylor, J. E., Rossville, 14.
Taylor, J. F., Topeka, 2.
Taylor, J. M., Wakarusa.
Taylor, John, Topeka, 2.
Taylor, N. J., Berryton, 20.
Taylor, Simon, Topeka, 1.
Taylor, R. L. & Sons, Topeka.
Taymen, J. W., Topeka, 8.
Taymen, M. D., Topeka, 8.
Templin, Mrs. M., Silver Lake.
Terrell, Claude, Richland.
Terrell, John, Auburn, 24.
Tevis, C. A., Topeka, 7.
Tevis, E., Topeka, 1.
Tevis, Frank, Berryton, 20.
Tevis, Mrs. Mary, Berryton, 20.
Tevis, N. L., Berryton, 20.
Tew, E. W., Topeka, 8.
Thatcher, E. D., Topeka, 1.
Thatcher, J. W., Tecumseh, 15.
Thomas, Mrs. S., Rossville.
Thomas, A. S., Silver Lake.
Thomas, C. A., Auburn, 25.
Thomas, E. J., Auburn, 23.
Thomas, Eliza, Silver Lake.
Thomas, F. J., Silver Lake, 11.
Thomas, F. W., Silver Lake.
Thomas, I. A., Tecumseh, 16.
Thomas, W. L., Willard.
Thomas, J., Lumber Co., Topeka.
Thompson, D. C., Topeka, 1.
Thompson, H. W., Topeka, 1.
Thompson, H. L., Elmont, 10.
Thompson, J. E., Tecumseh, 15.
Thompson, J. W., North Topeka, 5.
Thompson, L. W., Topeka, 8.
Thompson, O., Valencia, 25.
Thompson, Sarah B., Topeka.
Thompson, J. W., Topeka, 1.
Thomson, Geo., Tecumseh, 15.
Thresher, A. D., Berryton, 20.
Thresher, C. A., Berryton, 20.
Tibbs, Frank, Silver Lake, 12.
Tibbs, G. E., Silver Lake, 12.
Tibbetts, Dr. Weed, Richland.
Tice, J. K., Topeka, 7.
Tichurst, A. C., North Topeka.
Ticknor, C. V., Topeka, 1.
Tiffany, A. R., North Topeka, 6.
Tiffany, G. P., North Topeka, 6.
Tillman, Geo. T., Wakarusa, 22.
Tillman, S. E., Eskridge, 2.
Tillman, Willie, Richland.
Timberlake, J. J., Tecumseh, 15.
Timon, Ed. N., Topeka, Gen. Del.
Tinsler, George, Elmont.
Tinker, J. H., Rossville, 14.
Titus, F. A., Topeka, 7.
Titus, S. T., Wakarusa, 21.
Todd, C. M., Auburn, 23.
Tোধunter, J. C., Valencia, 25.
Tomlinson, A., North Topeka, 6.
Tomlinson, R., Tecumseh, 15.
Tomson, A. L. and A. B., North Topeka, 5.
Tomson, Albert, North Topeka, 4.
Tomson, J. M., Dover.
Tomson, John, Silver Lake, 12.
Tomson, Jno. B., Dover.
Topeka Pure Milk Co., Topeka, 4th and Jackson.
Towles, E., Topeka, 6.
Town, C. C., Valencia, 25.
Town, R. H., Valencia, 25.
Townsend, A. C., Topeka, 6.
Travis, Elmer, Valencia, 25.

Trimble, M. B., Rossville.
Trimble, W. W., Silver Lake, 12.
Trimbley, G. E., Elmont, 9.
Trostle, L., Rossville, 14.
Troutman, John, Topeka, 1.
Troutman, W. H., Topeka, 1.
Troxell, W. E., Topeka, 8.
Tubbs, J. B., Topeka, 617 Lane St.
Turner, Robt. N., North Topeka, 3.
Turner, W. F., North Topeka, 3.
Topeka County Club, Topeka.
T. R. Elevator Co., Wakarusa.

U

Uhl, A. D., Silver Lake, 12.
Uhl, Bigham, Silver Lake, 12.
Uhlman, Joseph A., Wakarusa.
Uhlly, Konrad, Auburn, 23.
Underwood, E., Topeka, 8.
Underwood, T., Topeka, 8.
Unger, A. T., North Topeka, 5.
Updegraff, O. T., North Topeka, 6.
Updegraff, W. D., North Topeka, 6.
Uphshaw, E. H., Topeka, 8.
Ure, Wm., Topeka, 7.
Usher, Wm., Topeka, 7.

V

Vance, Ed., North Topeka, 5.
Vance, James, Topeka, 1.
Vance, Martha, North Topeka, 4.
Vandemark, O. E., Topeka, 7.
Van Dorp, Fred, Valencia, 25.
Vanhole, J. L., Topeka, 6.
Van Nice, D. C., Richland.
Vanordstrand, Chas., Richland, 26.
Van Orsdal, F. M., Silver Lake, 11.
Vanorsdol, G. W., North Topeka, 6.
Vanorsdol, J. F., Topeka, 6.
Van Orsdal, J. M., Silver Lake, 11.
Vanorsdol, T. P., Silver Lake, 11.
Van Sant, Ross, Oakland.
Van Vleck, C. E., Rossville.
Van Vleck, F. H., Rossville, 14.
Vascarda, H. A., Topeka, 2.
Vaughan, J. T., Tecumseh, 16.
Vaughan, O., Tecumseh.
Vawter, A. Z., Wakarusa, 22.
Vawter, C. D., Wakarusa, 22.
Vawter, C. H., Wakarusa, 21.
Vawter, Wm. J., Wakarusa, 22.
Verhage, John, Valencia, 25.
Verhage, Sam, Valencia, 25.
Verter, George, Willard.
Vese, Thomas, Willard.
Vicory, M., Dover.
Viegner, L., Willard.
Vilven, Ed., Rossville, 14.
Vinzant, E. E., Topeka, 8.
Vitt, B. E., Richland, 19.
Volbert, Louis, Topeka.
Vorhees, J., Rossville.
Voorhies, R. L., Oakland.
Vrooman, J. M., Topeka, 8.
Vrooman, L. L., Topeka, 8.

W

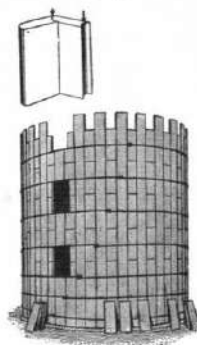
Wadsworth, T. W., Topeka, 1.
Waggoner, A. T., Topeka, 1.
Wagner, Geo. H., Rossville.
Wagner, J. H., Rossville.
Wagner, Nellie, Silver Lake.
Wagner, T. S., Silver Lake, 11.
Wagonrod, J. W., Topeka, 1.
Wagonrod, W. J., Topeka, 1.
Wagstaff, John, Tecumseh, 15.
Walker, J. L., Topeka, 7.
Walker, O. E., Topeka, 8.
Walker, S. S., Eskridge, 2.
Walker, W. M., Topeka, 7.
Walkley, W. W., North Topeka, 4.
Wallace, H. H., Topeka, 1815 College.
Wallace, H. H., Trustee, Topeka, 1815 College Ave.
Wallace, Hugh, Rossville, 13.
Wallace, James D., Tecumseh, 16.
Wallace, Robert, Kingsville.
Wallace, W. D., Topeka, 1235 Randolph.
Walraven, F. E., Elmont, 10.
Walter, E. P., Topeka, 1.
Ward, Alfred, Topeka, 2.
Ward, C. E., Silver Lake.
Ward, E. A., Topeka, 6.
Ward, F. M., North Topeka.
Ward, Geo. C., Elmont, 9.
Ward, J. R., Elmont, 10.
Ward, S. E., Rossville.
Ward, Sarah J., Topeka, 6.
Warr, C. E., Tecumseh, 15.
Warner, W. A., Valencia, 25.
Washburn, A., Topeka.
Washburn, F. M., Elmont, 9.
Washburn, F. M., Topeka.
Washington, Evline, Topeka, 7.
Washington, W. H., Topeka, 1.
Waters, L. C., Berryton, 20.
Watson, Enoch, Topeka, 1.
Watson, M., Topeka, 1.
Weaver, G. R., Elmont, 9.
Weaver, J. H., Tecumseh, 16.
Webb, Hannah, Topeka.
Webb, W. P., North Topeka, 6.
Webber, F. R., Tecumseh, 15.
Webber, Oscar, Tecumseh, 15.
Weber, Samuel, Tecumseh, 16.
Weeks, D., Elmont, 10.
Weir, Frank, Silver Lake.
Weir, George, Silver Lake, 11.
Weir, Wm., Tecumseh, 16.
Weir, W. F., Silver Lake, 12.
Weisbender, Carl, St. Marys.
Welchmans, Frank, Richland, 19.
Weldin, E. R., Tecumseh, 15.
Weldon, Annie, North Topeka, 5.
Weldon, Etta L., North Topeka, 5.
Weldon, J. A., North Topeka, 5.
Weldon, Mary E., North Topeka, 5.
Weldon, Myrtle, North Topeka, 5.
Weldon, W. E., North Topeka, 5.
Weldon, W. H., North Topeka, 5.
Wentworth, A., Silver Lake.
Werner, J. K., Eskridge, 2.
Wendel, C. H., Elmont.
Wendel, Earl, Elmont, 9.
Wendel, Geo., Elmont.
Wendell, E. F., North Topeka, 5.
Wendell, J. H., North Topeka, 5.
Wentworth, A., Silver Lake.
Werner, A. H., Wakarusa, 22.
Werner, Geo., Auburn, 24.
Werner, J. H., Silver Lake.

The Cement Stave SILO

Never Cracks, Shrinks or Swells
Burn or Decay or Blow Down.

Most Durable and Economical S I L O

Permanent as Cement
Cheaper than Wood



Over fifteen hundred
are in existence with-
out a failure, a record
unapproached by any
other silo.

A few of the men in Kansas
who have them.

A. BEAL, 3,
Valencia, Kansas

GEO. E. JOSS, 2,
Wakarusa, Kansas

Dr. W. S. LINDSAY, 2,
Waverly, Kansas

A. H. JURGENS,
Rock Creek, Kansas

THEODORE KRUP,
Tecumseh, Kansas

M. G. BIGHAM,
Ozawkie, Kansas

CHARL GRAHMS,
Perry, Kansas

Dr. KASTER,
One 720 Barrel Water Tank

Manufactured, Sold and Built by
C. C. Witwer
TOPEKA, KANSAS

Werner, Martin, Tecumseh, 15.
 Werner Bros. and Lambotte, Auburn, 24.
 West, A. E., Wakarusa, 21.
 West, B. A., Meriden, 2.
 West, D. L., Elmont, 9.
 West, E., Topeka.
 West, J. C., Topeka, 8.
 Westerdale, Ed. Topeka, 8.
 Westlund, L. J., Topeka.
 West, S. C., North Topeka, 3.
 West, W. M., Auburn, 24.
 Weyrauch, J., Auburn, 23.
 Whearty, Ed., Silver Lake, 11.
 Whearty, M. L., Silver Lake, 11.
 Whinery, F. G., Tecumseh, 15.
 Whitaker, H. A., Topeka, 1.
 Whitaker, S. A., Topeka, 1.
 Whitcomb, Geo. H., Topeka.
 White, A. J., Topeka, 7.
 White, Arthur E., Rossville.
 White, J. E., Rossville.
 White, J. H., Topeka, 1.
 White, W. E., Topeka, 8.
 Whittegow, Lewis, Topeka, 7.
 Whitehead, John W., Topeka, 8.
 Whitehead, L. L., Topeka, 6.
 White, W. O., North Topeka, 6.
 E. E. Whiteman, S. C. Landis, (Administrators for G. W. Whiteman, deceased) Elmont.
 Whiteman, E. E., Elmont, 10.
 Whiteman, Herman, Elmont, 10.
 Whiteman, F. L., Elmont, 9.
 Whiteman, L. J., Elmont, 9.
 Whitten, James, Auburn, 24.
 Whitten, Lewis, Wakarusa, 21.
 Whitten, Luther, Auburn, 21.
 Whittenack, L. E., North Topeka, 4.
 Whitlock, J. C., North Topeka, 4.

Whitlow, Byron, Topeka, 7.
 Whitlow, Thomas, Jr., Pauline.
 Whitney, O. D., Rossville, 14.
 Whitney, O. E., North Topeka, 6.
 Wiant, E. C., Silver Lake.
 Wiant, J. and E., Silver Lake, 11.
 Wickham, J. K., Topeka, 1.
 Wickman, D. F., Topeka, 1.
 Wilch, Chas. Jr., Richland, 19.
 Wilch, Chas. Sr., Richland, 19.
 Wilch, John, Richland, 19.
 Wilch, N., Richland, 19.
 Wilch, Viola, Richland, 18.
 Wilder, C. E., Tecumseh, 16.
 Wilder, Newton, Valencia, 25.
 Willard, J. N., Elmont, 10.
 Willard Lumber and Hardware Co., Willard.
 Willey, H. T., Elmont, 10.
 Willey, F. F., Elmont, 9.
 Willey, W. C., Elmont, 9.
 Williams, Ben, Eskridge, 2.
 Williams, Ben, Valencia, 25.
 Williams, C. D., Silver Lake, 11.
 Williams, D. A., Rossville.
 Williams, E. P., North Topeka, 3.
 Williams, Fred, Richland, 18.
 Williams, G. W., Topeka.
 Williams, I. E., Richland, 18.
 Williams, J. E., Topeka, 8.
 Williams, John, Topeka, 8.
 Williams, L. D., Richland.
 Williams, R. L., Wakarusa, 21.
 Williams, W. R., Topeka, 8.
 Willis, W. C., Willard.
 Wilshire, H., Rossville, 14.
 Wilson, A., Valencia.
 Wilson, A., Topeka, 8.
 Wilson, A. F., North Topeka, 5.
 Wilson, Bruce, Topeka.

Wilson, C. E., Topeka, 8.
 Wilson, C. E., Topeka.
 Wilson, C. W., North Topeka, 3.
 Wilson, Carey J., Topeka, 1247 Wayne.
 Wilson, Chas. C., Silver Lake, 12.
 Wilson, E. F., North Topeka, 5.
 Wilson, H. C., Topeka, 1.
 Wilson, J. L., Tecumseh, 15.
 Wilson, L. B., Topeka, 7.
 Wilson, M. B., North Topeka, 3.
 Wilson, Mary, Valencia.
 Wilson, O. N., Silver Lake, 12.
 Wilson, Roy E., North Topeka, 5.
 Wilson, Sherman, Topeka, 8.
 Wilson, Fanny, Topeka.
 Wilson, W. H., Topeka, 1.
 Wilt, Daniel, Rossville.
 Wilt, I. B., Rossville.
 Wilt, J. R., Rossville.
 Wilt, R. L., Rossville.
 Wind, George, North Topeka, 4.
 Winder, C. B., Topeka, 7.
 Winklerink, John, Willard.
 Winklerink, W., Willard.
 Winner, B. F., North Topeka, 4.
 Winner, O. F., North Topeka, 5.
 Winner, R. G., North Topeka, 5.
 Winter, Chas. J., Dover.
 Winter, Fred W., Dover.
 Winter, J. W., Dover.
 Winters, J. W. and Sons, Dover.
 Winters, John J., Hoyt.
 Wise, J. W., Tecumseh.
 Wiseman, E. C., North Topeka, 6.
 Wiseman, L. F., North Topeka, 5.
 Withey, Albert, Topeka.
 Withersell, C. H., Topeka, 8.
 Wiltner, C. C., Topeka, 2.
 Witt, John C., North Topeka, 4.
 Witter, Elmer E., Silver Lake, 11.
 Wolf, Mary M., Rossville, 13.

Wolf, O. D., Topeka, 1.
 Wolf, F. E., North Topeka, 5.
 Wolfolk, W. M., Topeka.
 Wood, C. E., Topeka, 8.
 Wood, Dennis, Rossville, 13.
 Wood, G. A., Topeka, 8.
 Wood, M. R., Rossville, 14.
 Wood, Mrs. Nettie M., Topeka.
 Wood, T. E., Silver Lake.
 Wood, W. A., Silver Lake.
 Woodard, J. L., Elmont, 10.
 Woodard, W. H., Elmont, 10.
 Woodcox, L. M., Berryton.
 Woodford, D. C., Silver Lake, 11.
 Woods, C. T., Topeka, 1.
 Woods, G. W., Tecumseh, 16.
 Woodworth, C. A., Tecumseh, 16.
 Woolley, A. L., Topeka, 7.
 Woolpert, N. F., North Topeka, 3.
 Wooster, A. J., North Topeka, 5.
 Wooster, Albert, Elmont, 9.
 Wooster, Ed., Silver Lake, 12.
 Workman, C. J., Tecumseh, 16.
 Worthington, Chas., Lecompton, 2.
 Worthington, W., Silver Lake, 11.
 Worthington, W. B., Rossville.
 Worthington, W. M., Topeka, 8.
 Wray, C., Tecumseh, 16.
 Wright, D. B., North Topeka, 6.
 Wright, E. B., Silver Lake, 11.
 Wright, J. D., Silver Lake, 11.
 Wyatt, J. A., Silver Lake, 11.
 Wyatt, J. F., Silver Lake, 12.
 Wylie, John K., Oakland.
 Wylie, Alexander, Dover.

Yager, J. M., Auburn, 23.
 Yager, S. J., Auburn, 23.

Yager, W. H., Auburn, 23.
 Yather, E. W., Berryton, 20.
 Yates, E. M., Silver Lake, 11.
 Yaw, E., North Topeka, 3.
 Yaw, M., North Topeka, 3.
 Yingling, Edward, Topeka, 1.
 Yingling, R. G., Berryton, 20.
 Yocum, R. J., Rossville.
 Yoder, S. J., Auburn, 24.
 York, B. E., Meriden, 2.
 Young, B. F., Richland, 26.
 Young, C. H., North Topeka, 4.
 Young, Evan, Auburn, 24.
 Young, H. L., Topeka, 7.
 Young, J. M., Topeka, 1.
 Young, Sarah J., Wakarusa, 22.
 Young, Sherman, Wakarusa, 22.

Z

Zehner, P. H., Richland, 26.
 Zeigler, F. J., Topeka.
 Zeigler, Katherine, Berryton, 20.
 Zeigler, L. W., Berryton, 20.
 Zickefoose, Henry, Rossville.
 Zickefoose, O. A., Rossville, 14.
 Zickefoose, W. H., Rossville, 14.
 Zimmerman, John, Valencia, 25.
 Zimmerman, Wm., Kansas City, Mo.
 Zinn, Cal., Topeka.
 Zinn, Herman, Topeka.
 Zirkle, Chas. M., Berryton, 20.
 Zirkle, Geo., Berryton, 20.
 Zirkle, Harve, Richland, 19.
 Zirkle, Howard, Richland, 19.
 Zirkle, Jerry, Tecumseh, 15.
 Zirkle, Silas, Berryton, 20.
 Zirkle, W. E., Richland, 19.
 Zollinger, M. J., Topeka.
 Zook, J. F., Rossville, 13.

Y

BACON REALTY COMPANY

600 KANSAS AVE

Phone 1825W

TOPEKA

**INVESTMENTS
 COLLECTIONS
 RENTALS
 LOANS**

We can sell or exchange your Real Estate or Business no matter where located.

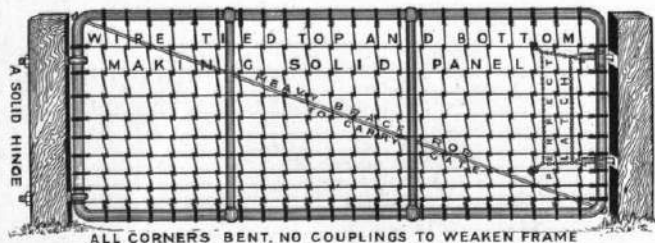
List With Us.

Why Not Trade?

Your Farm for Merchandise or Hardware. Get into business for yourself—We have stock from \$1,000 to \$30,000 to trade for good farms.

DO YOU WANT A MODERN HOME?

We have a long list of good homes in Topeka where your children can have the best educational advantages.



Why not throw that old board gate away and put up a neat strong gate that will last for years, and turn all kinds of stock.

Adams & Adams

1006-8-10 North Kansas Ave.

Topeka, Kansas



We also handle

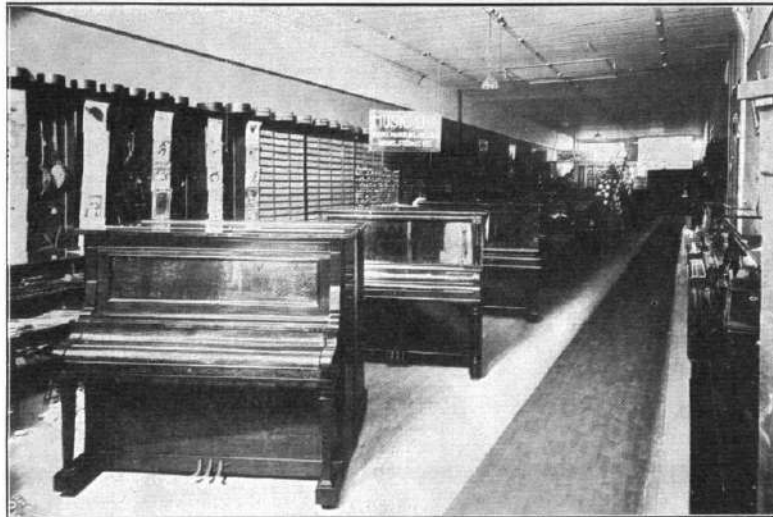
**Pumps,
 Windmills,
 Pipe,
 Roof Paint,
 Engines etc.**

The Emahizer-Spielman Furniture Co.

THE LARGEST WHOLESALE AND RETAIL

Complete House-furnishing Company in the State of Kansas.

FURNITURE
 CARPETS
 RUGS
 DRAPERIES
 LINOLEUM
 SHADES
 OIL CLOTH
 MATTING
 PIANOS
 PLAYER PIANOS
 SEWING MACHINES
 TALKING MACHINES
 and RECORDS



TOYS
 TRUNKS
 STOVES
 REFRIGERATORS
 WASHING
 MACHINES
 TINWARE
 ALUMINIUM WARE
 CUTLERY
 HARDWARE
 PAINTS
 and BRUSHES

Baby Carriages

Lamps

Baskets

Valises

Rubber Goods

We are exclusive agents for
 Chickering & Sons Pianos, Boston,
 Mass.
 The Baldwin Piano, Cincinnati, Ohio.
 Hobart M. Cable Pianos, Chicago, Ill.
 Bush & Gerts Pianos, Chicago, Ill.
 Knight - Brinkerhoff Pianos, Brazil,
 Ind.



We are exclusive agents for
 Cicilian Player Pianos.
 Hobart M. Cable Player Pianos.
 Lindenberg Player Pianos.
 Columbia Player Pianos.
 Peerless Electric Player Pianos.



We employ no teachers, no commission men, no bell pullers. We are wholesale agents, buy in solid cars, pay spot cash, save middlemen's profits. We can save you \$100.00 to \$150.00 over the man who comes to your home soliciting your business as we have 27 different departments to charge store expense to.

We are agents for
 Columbia Grafonolas
 Victor Victrolas
 Edison Phonographs
 and Records.
 Get our prices before
 you buy.

We are exclusive agents for the FREE SEWING MACHINE for the city of Topeka and Shawnee County. This is the only high-grade sewing machine sold at a medium price. Is fully insured. Sold as low as \$1.00 down and \$1.00 per week on our Club plan.



Member
 TOPEKA REBATE
 ASSOCIATION

RAILROAD
 FARES
 REFUNDED

We Pay Freight
 on all goods to any
 point in Kansas.

Mail Orders given
 prompt attention

517-519 KANSAS AVENUE

518-520 JACKSON AVENUE

Capital Auto & Supply Co.

119-123 E. 7th Street
TOPEKA

❖

General Agents For

BUICK

❖

Supplies---Storage---Painting---Repairs

FISK TIRES

"By Miles the Best"

Pure Para Tubes

Heavy Car Type Casings

Expert Tire Repairing

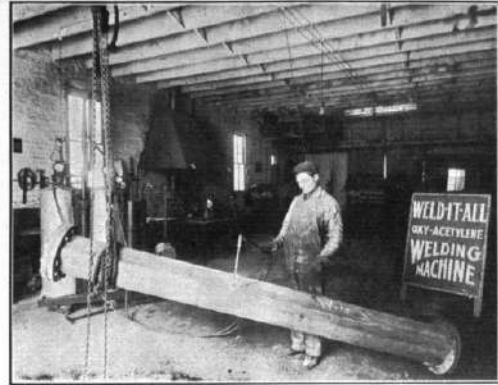
SHAWNEE TIRE & REPAIR CO.

DISTRIBUTOR & ADJUSTER

One Sixteen East Seventh

ERWIN KELLER, Mgr.
Phone: One-Two-Nine-Eight

You Break It---We Fix It



OXY-ACETYLENE WELDING

We weld all broken metals—automobile cylinders, crank and transmission cases, axles, housings, frames, manifolds, gears, steering knuckles, parts of machinery of all kinds. Stoves and furnace parts, sectional boilers, tools, farm machinery, or any parts of

Cast Iron Copper Bronze
Steels Brass Aluminum
or any known metal.

Send us all broken parts and ask for estimates of cost. Satisfactory workmanship guaranteed at reasonable prices.

Elmore Auto Company

Phone 3178

515 Quincy Street

Topeka, Kansas

The Southwick Auto Supply Co.

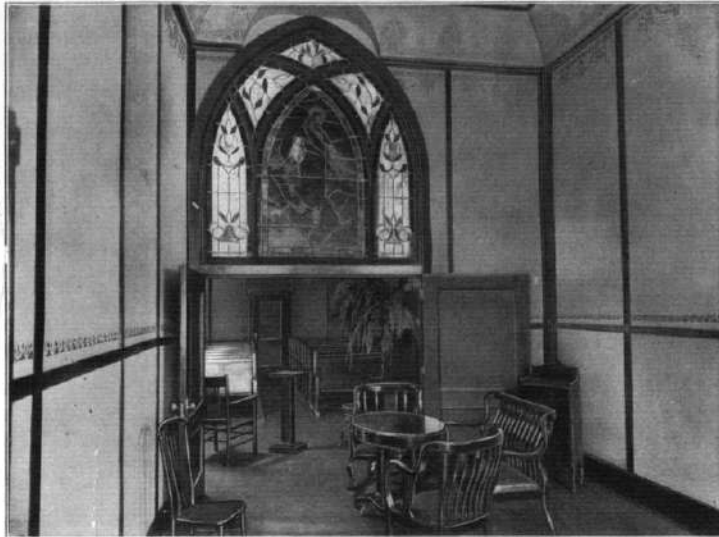
Topeka, Kansas

Invites your patronage and assures you service, courtesy and the proper goods at the right price. Ask for their catalogue. Don't forget they stock all the goods they catalogue.

The Southwick Auto Supply Co.

925 KANSAS AVE.

TOPEKA, KANSAS



Partial View of Chapel as seen through Reception Room

H. W. Bomgardner

Funeral Director
and Embalmer

Personal Service

Masonic Building

621 Jackson St.

Topeka, Kansas

PHONE, OFFICE 146 W

RESIDENCE 146 R

First Class Ambulance Service

BOEGER'S STUDIO



Miss Therese Marie Blitz

The difference between the ordinary photograph and the kind we make is due to our skill and high grade equipment.

Every sitter is given individual attention and treatment and the results we produce are photographic portraits--not merely photographs.

Let us demonstrate our skill by making for you the best portrait you have ever had.

Telephone No. 3989

707 Kansas Avenue

The Leading Photographers in the State